

260
Floor Scrubber
Traction Driven
Brush Driven

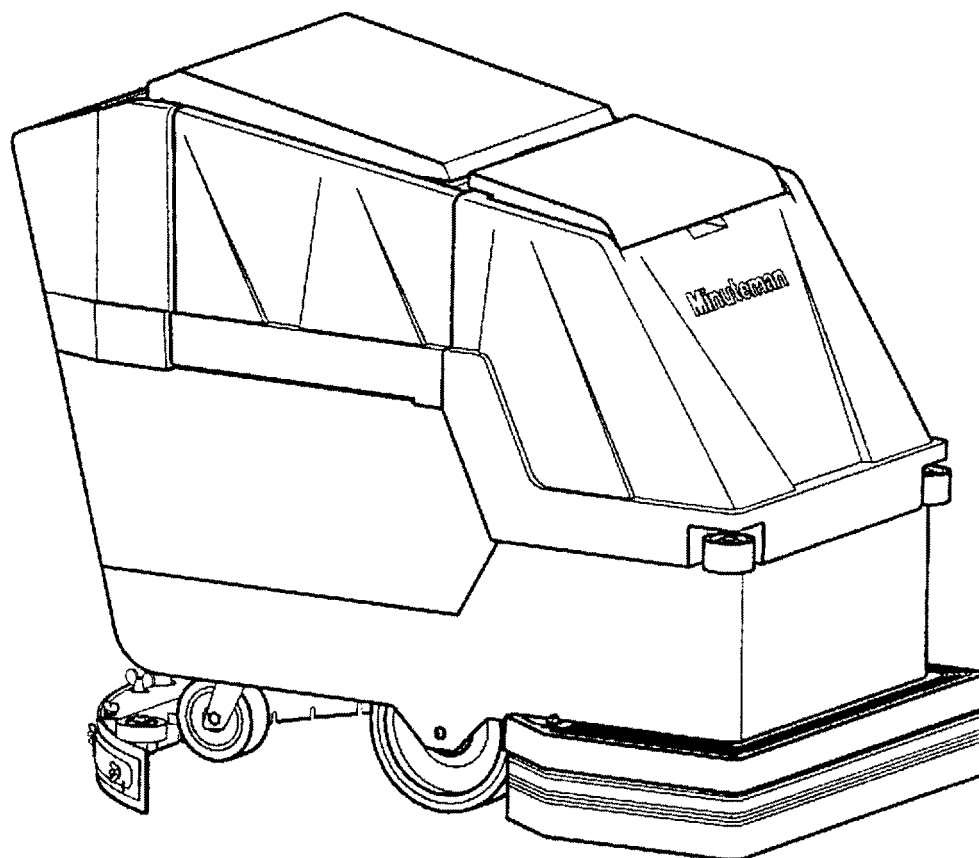
Model:
MC260024QPBD
MC260026QPTD
MC260024CEBD
MC260026CETD

OPERATION

SERVICE

PARTS

CARE



Revised 9/05

Minuteman[®]

TABLE OF CONTENTS

Safety Instructions	1
Electrical Requirements	2
Control Panel Identification	3
Squeegee Adjustments	4
Operating Instructions	5
Main Polyethylene Components	6 & 7
Recovery Tank and Solution Tank	8 & 9
Drive Assemblies (Brush Driven)	10 & 11
Mainframe (Brush Driven)	12 & 13
Console Assembly (Brush Driven)	14 & 15
Recovery Tank and Solution Tank	16 & 17
Drive Assemblies (Traction Driven)	18 & 19
Mainframe (Traction Drive)	20 & 21
Console Assembly (Traction Driven)	22 & 23
Squeegee Mechanism Assembly	24
Squeegee Assembly Complete	25
Wiring Diagram (Brush Driven)	26
Wiring Diagram (Brush Driven, CE Model)	27
Wiring Diagram (Traction Driven)	28
Wiring Diagram (Traction Driven, CE Model)	29

EC Declaration of Conformity

according to Directives 89/392, 89/336, 72/73

We, Minuteman International Incorporated, of 111 South Rohlwing Road Addison Illinois 60101 USA, declare under our sole responsibility that the products MC260024CE, MC260026CE, MC260027CE, MC265024, MC265026 Commercial Automatic Floor Scrubbing machines to which this declaration relates corresponds to the relevant requirements of the EC Directives 89/392, 89/336 and 72/73. The following standards were used to determine compliance with the Directives: EN 292, EN 294, EN 811, EN 55011, EN 55104, EN 50082-2, EN 60335-1 and IEC 335-2-72.

SOUND		VIBRATION
77 dB Operator	74 dB At 3m	1 m/s² At Operators Hand Grips
Tests were conducted on 6/7/96 with calibrated sound and vibration equipment under the conditions noted below:		
General Condition: Cloudy Temperature: 29 ^o C Barometric Pressure: 29.5		Wind: 0 km/hr Humidity: 85%



 Jeff Pollack, Standards Engineer
 Form: EC008 RevC

 Feb. 11, 2002
 Date

IMPORTANT SAFETY INSTRUCTIONS

CAUTION

Operators must read and understand this manual before operating or maintaining this equipment.

- Keep hands and feet clear of moving parts while machine is in operation.
- All switches must be in the “OFF” position when charging batteries.
- Electrical motors and components can cause an explosion when operated near explosive materials or vapors. Do not operate this machine near flammable materials such as solvents, thinners, fuels, grain dusts, etc.
- Make sure all switches are turned “OFF” and battery connections are removed before performing any maintenance procedures.
- Store or park this machine on a level surface only.
- These machines are designed for level floor operation only. DO NOT OPERATE on ramps or inclines.
- Battery acid can cause burns. When working on or around batteries, wear protective clothing and safety glasses. Remove metal jewelry. Do not lay tools or metal objects on top of batteries.
- This machine is not suitable for picking up hazardous dust.
- Charging batteries generates explosive gases. DO NOT CHARGE BATTERIES WHEN OPEN FLAMES OR SPARKS ARE PRESENT. DO NOT SMOKE. Make sure the charger is turned off before disconnecting it from the batteries. Charge the batteries in a well-ventilated area.
- Maintenance and repairs must be performed by authorized personnel.

SAVE THESE INSTRUCTIONS

ELECTRICAL REQUIREMENTS:

This piece of equipment operates on 24 Volt DC.

BATTERY REQUIREMENTS:

4 x 6V 220AH P/N 956720

4 x 6V 275AH P/N 956740

BATTERY SERVICE AND INSTALLATION:

- * Warning: Battery acid can cause burns. When working on or around batteries, wear protective clothing and safety glasses. Remove metal jewelry. Do not lay tools or metal objects on top of batteries.

BATTERY INSTALLATION:

1. Disconnect tank drain hose from rear of machine (6).
2. Raise tank assembly by raising rear cover and tilting tank, Figure 1.
3. Install batteries as shown in Figure 2.

CHARGING OF BATTERIES:

Charging of batteries generates explosive gases. DO NOT CHARGE BATTERIES WHEN OPEN FLAMES OR SPARKS ARE PRESENT. DO NOT SMOKE. Make sure the charger is turned off before disconnecting it from the batteries. Charge the batteries in a well-ventilated area. Fluid levels should be checked before and after charging and maintained at the proper levels.

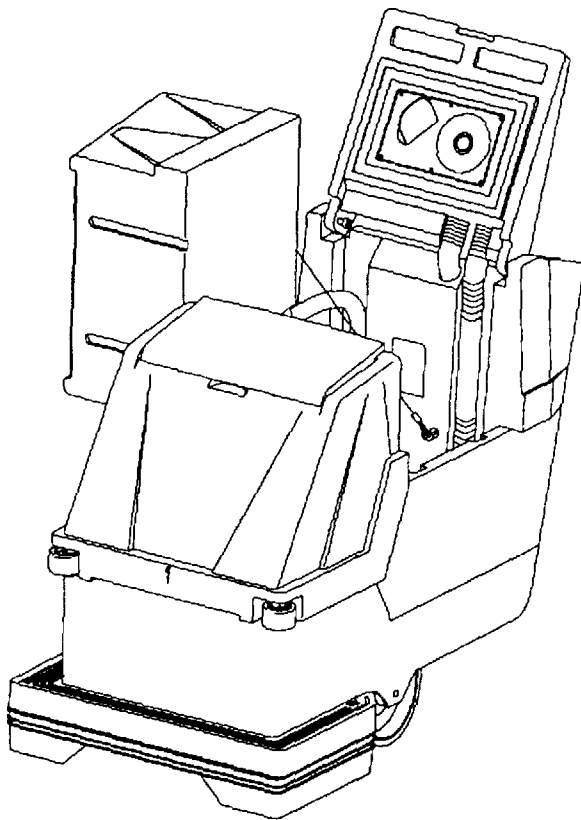


Figure 1

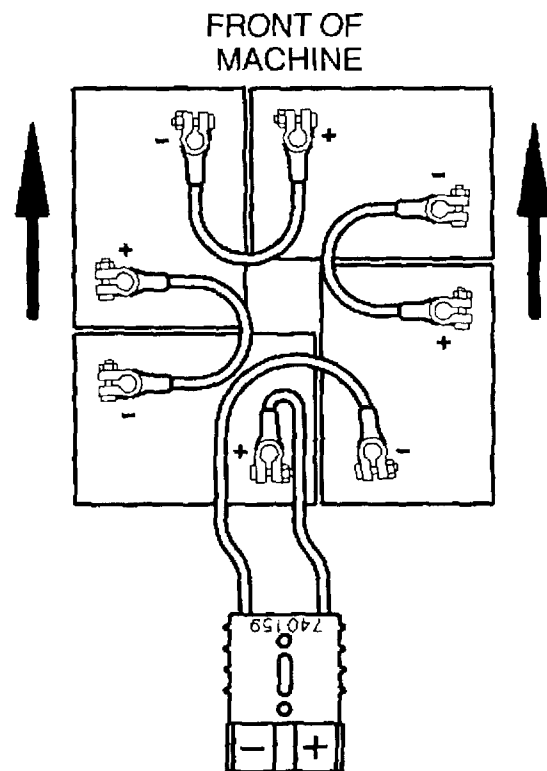
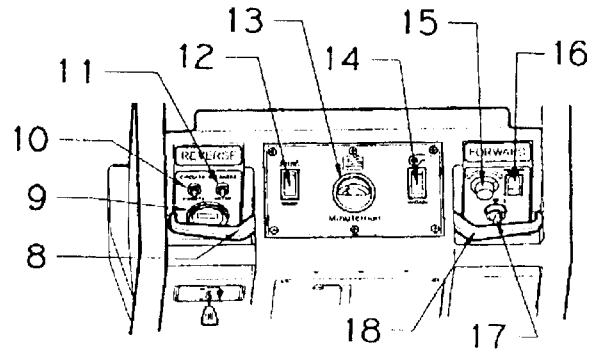
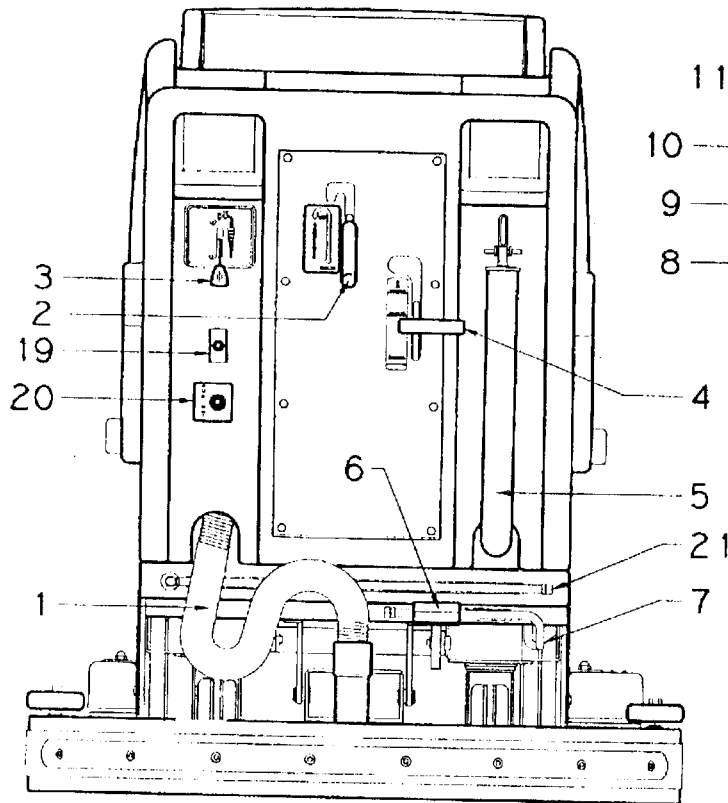


Figure 2

CONTROL PANEL IDENTIFICATION



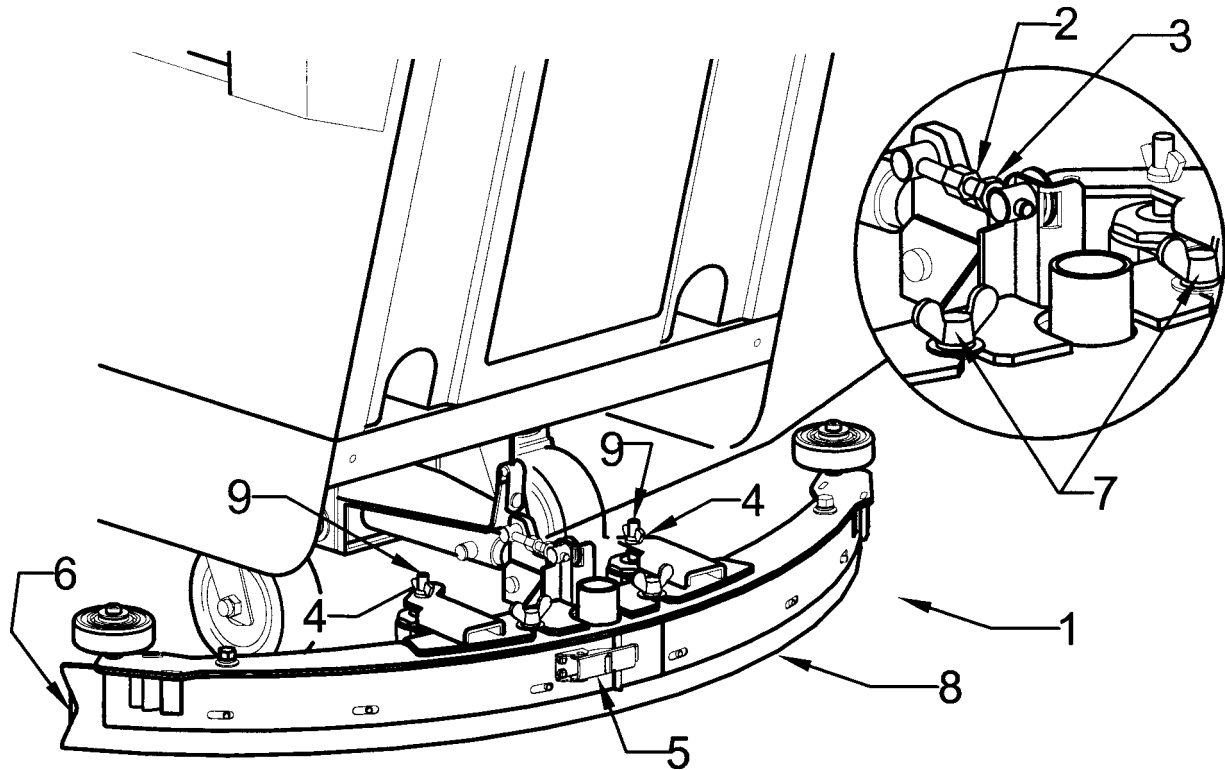
1. Vacuum recovery hose
2. Squeegee lift lever
3. Solution control lever
4. Brush pressure handle
5. Drain hose for recovery tank
6. Foot pedal for lower/raising brush
7. Drain hose for battery tray
8. Reverse control lever
9. Hour meter (optional)
10. Circuit breaker for vacuum motor
11. Circuit breaker for brush motor
12. Brush switch
13. Battery condition gauge
14. Vacuum switch
15. Speed control knob
16. Main power switch
17. Key switch (optional)
18. Forward control lever
19. Pump switch (optional)
20. Quick disconnect aux. out (optional)
21. Dump hose for solution tank

AUTO SCRUBBER BRUSH DESCRIPTION

TYPE	DESCRIPTION	DURABILITY*	COLOR	COMPARISON TO PADS	RECOMMENDED USE
Bassine	Natural Fiber	Short	Dark Brown	Red	Light duty general cleaning, acid etching
Nylon	Nylon	Medium	Black	Tan/Red	General cleaning & scrubbing vinyl floors, ceramic tile & concrete floors
Dyna-Scrub	Nylon impregnated with 500 Grit Silicon Carbide Fine Bristle, Dense Fill	Long	Light Blue	Red	General scrubbing, vinyl tile, ceramic tile, epoxy floors, urethane finish, uneven concrete floors
Power-Scrub	Nylon impregnated with 120 Grit Silicon Carbide Fine Bristle, Dense Fill	Long	Rust	Red/Blue	Moderate aggressive scrubbing, tile floors concrete floors
Poly-Grit	Nylon impregnated with 80 Grit Silicon Carbide Coarse Bristle	Long	Green	Brown/Black	Aggressive stripping and scrubbing, tile floors, unfinished concrete floors
Strata-Grit	Nylon impregnated with 46 Grit Silicon Carbide Coarse Bristle	Long	Dark Blue	Black	Heavy duty stripping/scrubbing unfinished concrete

* Durability is dependent on floor surface, chemicals used and proper care.

SQUEEGEE ADJUSTMENTS



The squeegee set-up is pre-adjusted at the factory. Adjustments may be required to get optimum performance for different floors and conditions.

1. **Ensure that the scrubber is on a relatively flat surface. Turn on the main power switch and raise the scrub head assembly off the floor. Set the squeegee/ vacuum switch to the automatic mode.**
2. Turn the speed control knob counter-clockwise to the low speed position. Squeeze the forward control lever to lower the squeegee (item 1) to the floor. Move the machine one or two feet forward to check the rear squeegee blade (item 8) for uniform deflection to the floor.
3. If uneven deflection or lay is evident, minor adjustments may be necessary to avoid streaking and uneven wear on the blade.
4. To correct this, loosen the wing jam nut (item 4) in order to adjust the caster height. If the squeegee blade is deflecting too much, the casters need to be lowered to control the down pressure. Lower the caster by turning the exposed threaded stem (item 9) on the caster clockwise. Make the adjustment a few turns at a time.
5. Repeat step 2.
6. If the blades are not deflecting enough, raise the caster by turning the stem counter-clockwise to adjust the caster height to allow more down pressure on the squeegee. Repeat Step 2.
7. Make sure that there is an even deflection on the entire length of the rear blade. Adjust the castors and retighten the wing jam nuts to lock the caster setting in place.
8. Pitch adjustment is necessary if the outer ends on the squeegee blade does not contact the floor and there is too much deflection in the middle area or if the outer ends are over deflected and there is no contact in the middle.
9. To adjust pitch, lower the squeegee to the floor. Loosen the lock nut (item 3) in the turnbuckle assembly. Turning the turnbuckle (item 2) clockwise or counterclockwise controls the forward and backward pitch of the squeegee. Having the rear blades deflected uniformly along its entire length is the desired setup.
10. Repeat Step 2 until the desired setup is achieved.
11. In certain applications where a non-slotted front wiper blade (item 6) is needed, detach the squeegee assembly by loosening the wing bolts (item 7). Unlock the clamp on the front squeegee to release the straps and flip the blade over to the non-slotted side. Reattach straps and lock the clamp back in place.
12. You can also easily replace the rear blade by unlatching the latch (item 5) and removing the straps by sliding them off the assembly.

OPERATING INSTRUCTIONS

1. Filling: Fill the solution tank with the desired amount of water and add liquid cleaning solution to the proper dilution ratio. DO NOT USE powdered cleaning chemicals. Powders are unlikely to dissolve thoroughly, resulting in clogging the in-line solution filter. This can reduce or stop water flow to the brush.
2. Close lid.
3. Turn on main power switch (refer to Page 3, #16). (Traction Drive Only)
4. Adjust main speed control, #15 to full counter-clockwise position. (Traction Drive Only)
5. Lower brush assembly:
 - Depress foot pedal (6) slightly and push in on lever (4) to release, to increase brush pressure pull up and back on lever (4) to lock in position.
 - To lift the brush, press the pedal down until lift mechanism engages.
6. Turn on brush switch.
7. Adjust solution control feed lever.
8. Select vacuum operation:
Brush Driven Models – Turn vacuum switch to “On” position Traction Driven Models
 - a) “Vacuum On” mode – Vacuum will remain on until switched to the “off” position
 - b) “Vacuum Auto” mode – Vacuum will come on automatically when forward or reverse handles are squeezed, and remain on approximately 5 seconds after handle release.
9. Lower squeegee assembly.
10. Squeeze forward handle #18 and adjust forward speed. (Traction Drive Only)

After Use:

1. Turn off solution feed.
2. Switch off brush and raise.
3. Raise squeegee assembly.
4. Turn off vacuum motor.
5. Solution and recovery tanks should be emptied after every use.

MAINTENANCE:

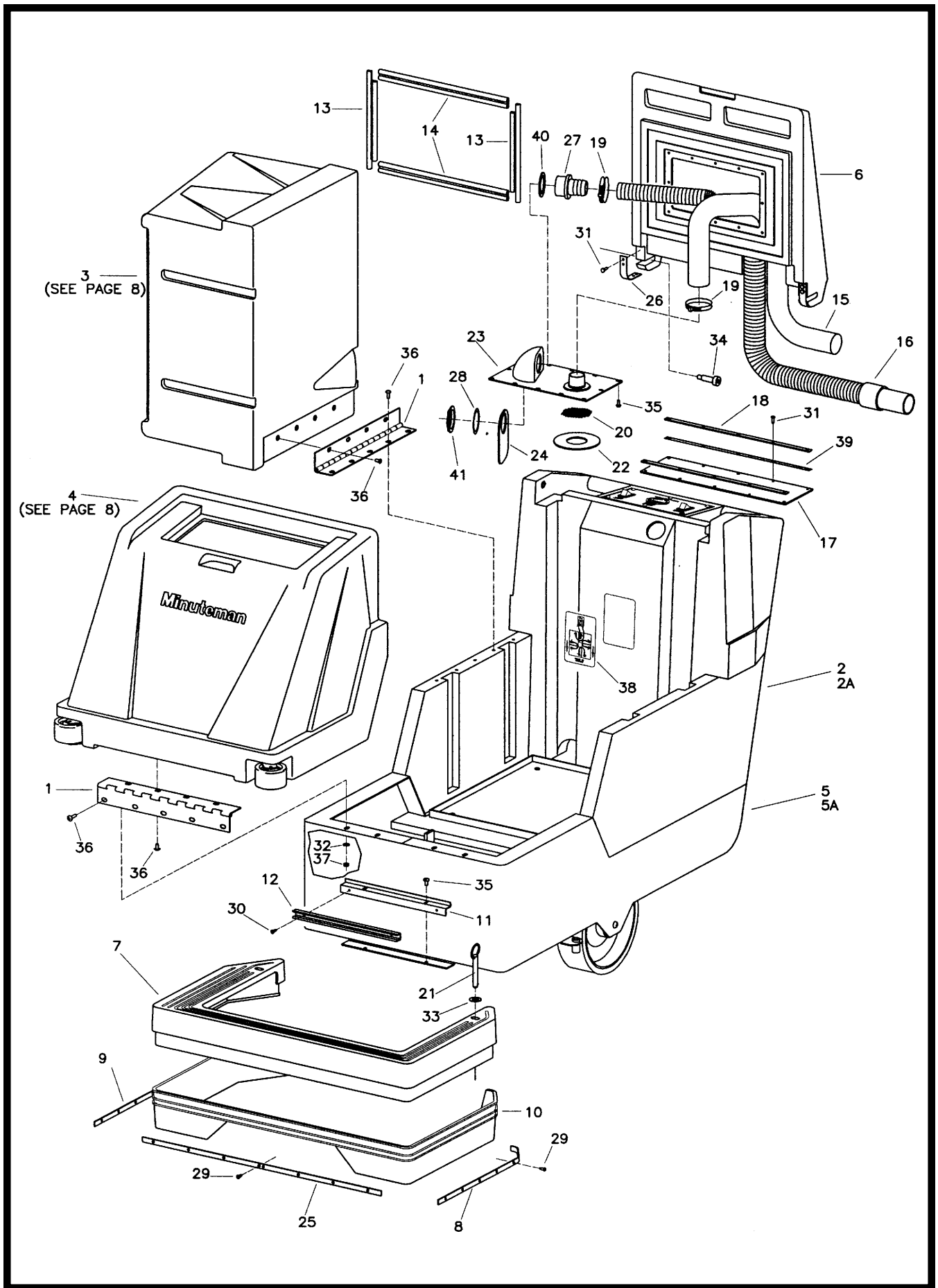
Daily

1. Clean float assembly & squeegee blades.
2. Recharge batteries (check battery acid levels before and after charging).

Monthly

1. Check wear on squeegee blades.
2. Grease front and rear wheels.
3. Grease pivot points on brush motor assembly.

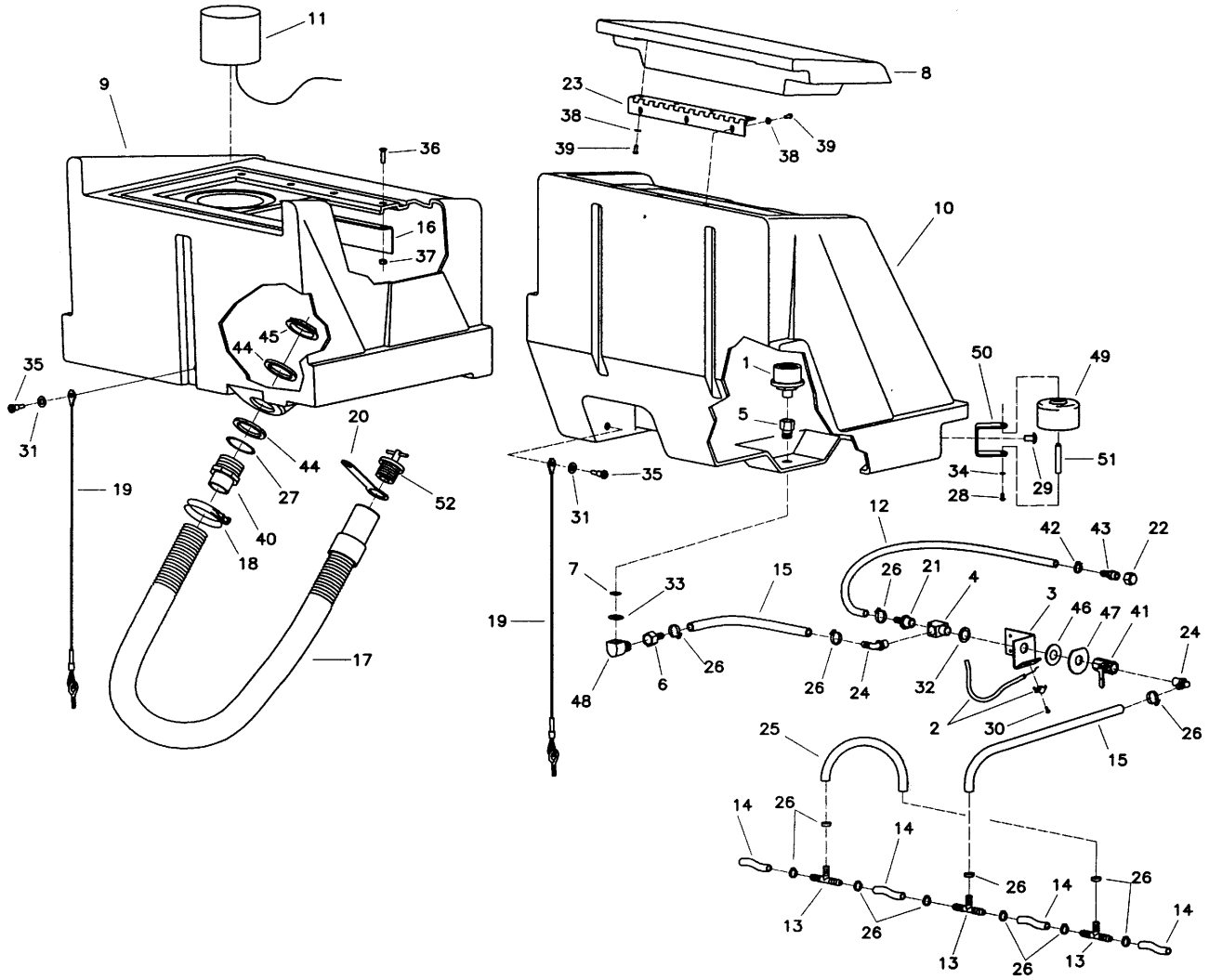
Every 500 hours check condition of carbon brushes on vacuum motor and brush drive motor.



Parts List

Item	Part No.	Qty.	Description
1	260087	2	Hinge 15"
2	260090	1	Rear Base Char Grey
2A	260256	1	Rear Base 260TD Char Grey
3	260091	1	Recovery Tank 260 Light Grey
4	260092	1	Solution Tank 260 Light Grey
5	260093	1	Chassis MMN 260
5A	260360	1	Mainframe MMN 260TD
6	260096B	1	Lid Recovery 260 Burgundy
7	260098	1	Front Skirt 260 Black
8	260142	1	Skirt Retainer L.H.
9	260143	1	Skirt Retainer R.H.
10	260145	1	Splash Skirt
11	260148	1	Solution Dump Bracket 14GA
12	260149	1	U Channel 12"
13	260157	2	Lid Gasket Short 260B
14	260158	2	Lid Gasket 260B
15	260159	1	Hose Vac 1.5 x 78" Wireloc
16	260160	1	Recovery Hose Assy. 260B
17	260169	1	Lid Flap
18	260170	2	Retainer Strip
19	260203	2	Clamp Hose 102120 Murray
20	260212	1	Screen Filter
21	260241	2	Pin Hitch 7/16 x 3
22	260294	1	Gasket 260
23	260299	1	Shut-Off Plate Assy.
24	260301	1	Deflector Flap
25	260336	1	Skirt Retainer - Front
26	260353	2	Lid Pivot Strap
27	450037	1	Adapter MCH
28	450081	1	WSR-1.908 x 2.41 x .03 SS
29	711106	20	SCR-ST-A 10 x .75 PL
30	711124	2	SCR-ST-B 10 x .37 NI
31	711161	10	SCR-Hi/Lo #10 x 3/4 Zinc
32	711505	4	WSR-Flat 1/4
33	711508	2	WSR-Flat .44 x 1.00 x .08
34	712102	2	Bolt - Shoulder 1/2 x 1.5
35	712540	14	SCR-MC 10-24 x .37 SS TH
36	712565	17	SCR-MC 1/4-20 x .62 SS
37	712667	4	Nut-Nyloc 1/4-20 SS
38	715607	1	Decal - Battery Cable Rout
39	760263	2	Foam Tape 1/16 x 1/2
40	828970	1	WSR-Neop 1.87 x 2.4 x .125
41	828971	1	Nut - 1 1/2 Pipe Thread

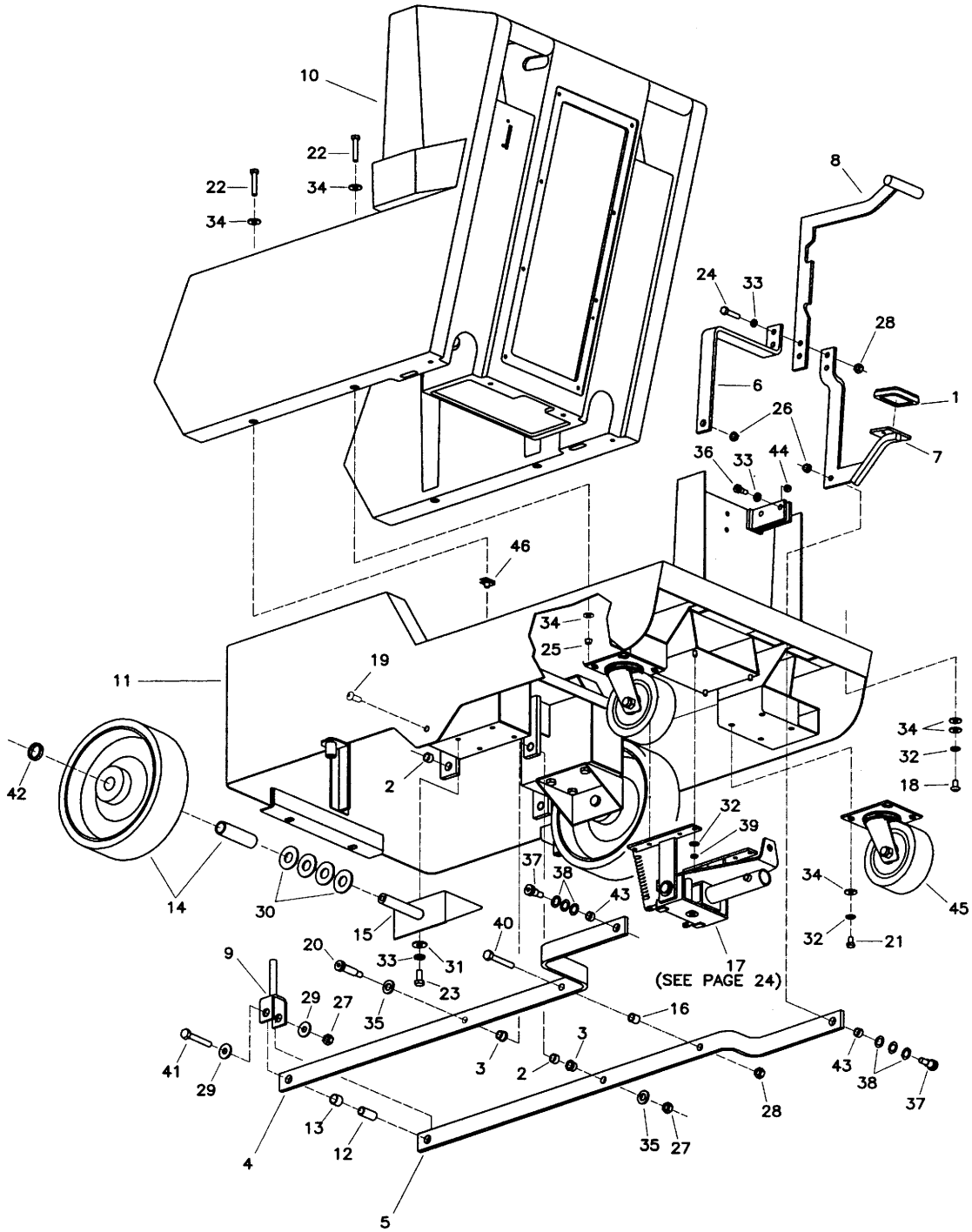
Brush Driven



Parts List

Item	Part No.	Qty.	Description
1	130118	1	Strainer Solution M3-40
2	210045	1	Cable Solution Control
3	210370	1	Solution Valve Bracket
4	210408	1	Fitting Brass Tee 3/8MPT x 3/8FPT
5	210409	1	Fitting Brass 3/8MPT x 3/8FPT
6	210410	1	Fitting Brass 3/8FPT x 3/8HOSE
7	210414	1	O-Ring 2-113
8	260029B	1	Solution Lid Burgundy
9	260091	1	Recovery Tank 260 Lt Grey
10	260092	1	Solution Tank 260 Lt Grey
11	260156	1	Float Assembly
12	260162	1	Hose, Solution Dump 38"
12A	260193	1	Solution Hose 3/8 Nylobr
13	260178	3	Fitting Nylon T 3/8 Hose
14	260179	4	Hose Nylobraid 3/8 x 2.38
15	260182	2	Solution Hose C/L 18"
16	260184	1	Support Angle
17	260202	1	Hose Assembly 260B New Style
18	260203	1	Hose Clamp 102120 Murray
19	260214	2	Tank Cable Assy. 260
20	320269	1	Strap, Drain Plug Retaining
21	342430	1	Fitting Brass 3/8MPT x 3/8HOSE
22	430114	1	Fitting Nylon Cap 1/4 FPT
23	450021	1	Hinge
24	450040	2	Elbow PLT 3/8MPT x 3/8BARB
25	450055	1	Hose Nylon 3/8 ID 9"
26	450076	13	Crimp Clamp SS 185R SS
27	450081	1	WSR 1.908 x 2.41 x .03 SS
28	710353	2	SCR-MC 10-32 x .37 Zinc
29	710985	2	SCR-SC 3/8-16 x .62
30	711124	1	SCR-ST-B 10 x .37 NI
31	711506	2	WSR-Flat 5/16 (Narrow) ST PL
32	711512	1	WSR-Flat .75 x 1.37 x .08
33	711513	1	WSR-Flat .689 x 1.06 x .029 SS
34	711553	2	WSR-Internal Lock #10
35	712041	2	Bolt-Shoulder 1/4-20 x .44 x .3
36	712563	4	SCR-MC 1/4-20 x 1.00 SS
37	712667	4	Nut-Hex Nyloc 1/4-20 SS
38	712764	7	WSR #10 SS
39	712822	7	SCR-MC TR HD 10-24 x .50 SS
40	760220MCH	1	1.5 Adapter MCH
41	809413MCH	1	Valve Solution
42	828490	1	Clamp Crimp 140R
43	828952	1	Fitting PP 1/4MPT x 3/8BARB
44	828970	2	WSR-Neop 1.87 x 2.4 x .125
45	828971	1	Nut 1 1/2 Pipe Thread
46	828975	1	WSR-Neop .75 x 1.5 x .09
47	829463	1	SS Washer
48	830062	1	Fitting Brass 90 3/8MPT x 3/8FPT
49	832896	2	Guide Wheel
50	832949	2	Bracket, Bumper
51	833254	2	Bumper Wheel Axle
52	833316	1	Drain Plug

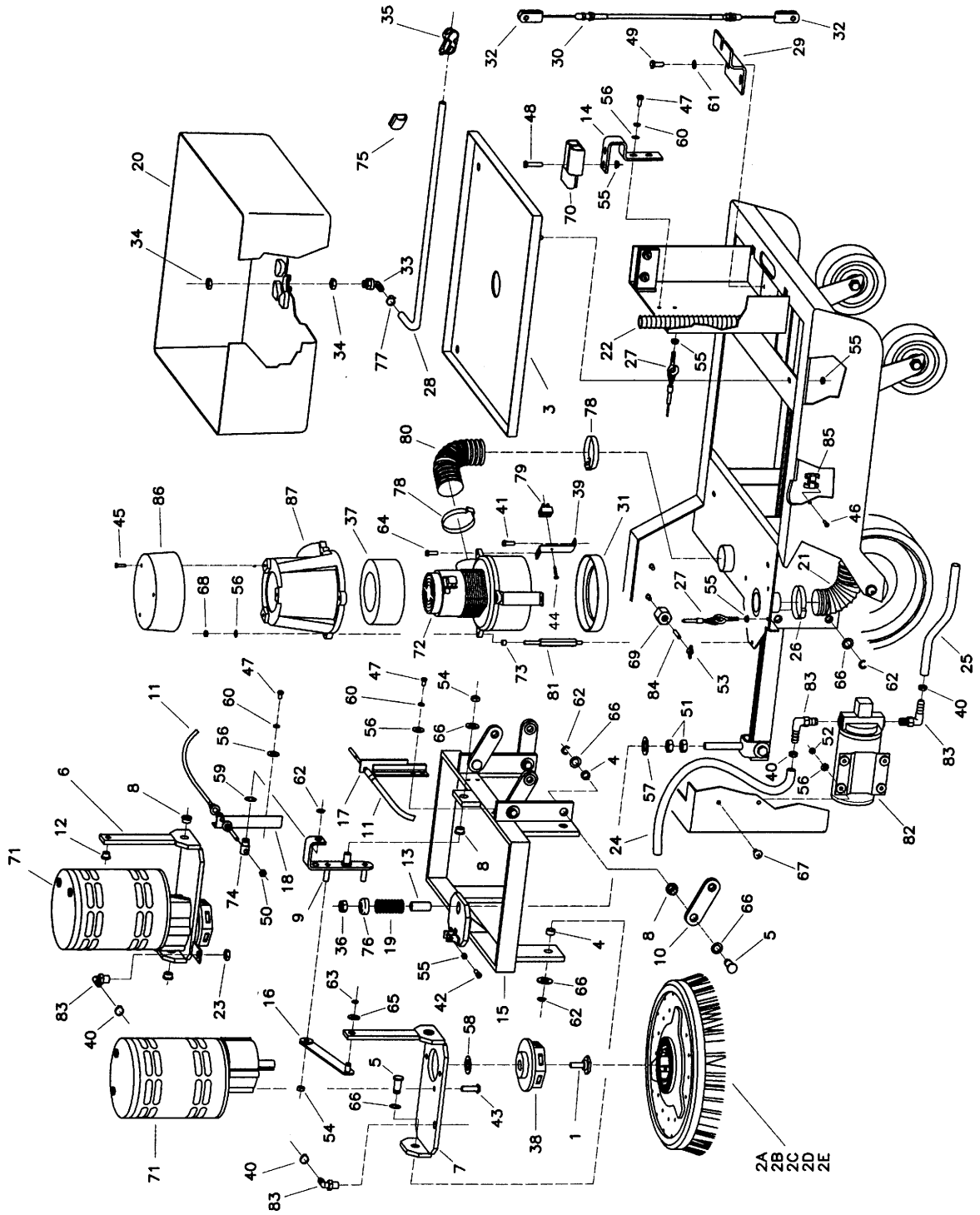
Brush Driven



Parts List

Item	Part No.	Qty.	Description
1	210142	1	Pedal Pad
2	260030	5	Bushing .5015 x .628 x .375 OI
3	260041	2	Bushing-FLG .502 x .750 x .375
4	260043	1	Lift Arm, Left Side
5	260044	1	Lift Arm, Right Side
6	260046	1	Pedal Brace
7	260054	1	Pedal Weldment
8	260055PTD	1	Lift Handle Weldment
9	260075	1	Yoke Weldment
10	260090	1	Rear Base Char Gray
11	260093	1	Chassis MMN 260
12	260125	1	Bushing, Yoke .407 x 1.687 STL
13	260128	1	Spacer-Yoke
14	260130	2	Wheel 10" w/Bushing
15	260136	2	Wheel Axle Bracket Assy
16	260141	1	Spacer - Lift Arm
17	260317	1	Squeegee Mechanical Assy
18	710196	4	SCR-MC 5/16-18 x .62
19	710986	2	SCR BHCS 3/8-16 x 1.00 Zinc
20	710992	1	Shoulder Bolt 1/2 x 1.25 x 3/8
21	711228	8	Bolt HH 5/16-18 x .75 STL Zinc
22	711232	4	Bolt HH 5/16-18 x 1.50
23	711242	8	Bolt HH 3/8-16 x 1.00
24	711250	2	Bolt HH 3/8-16 x 1.25 STL Zinc
25	711374	2	Nut-Nyloc 5/16-18
26	711375	2	Nut-Nyloc 3/8-16 1/2 Nut
27	711380	2	Nut, Nyloc 3/8-16
28	711439	3	Nut Flanged Wizz 3/8-16
29	711507	2	WSR-Flat .37 x 1.12 x .06
30	711512	8	Washer Flat .75 x 1.38 x .08
31	711515	8	WSR-Flat .406 x .812 x .0625
32	711545	16	Washer Helical 5/16
33	711546	12	Washer Helical 3/8
34	711575	22	Washer Flat .31 x .75 x .06 STL
35	711579	2	WSR-Flat .56 x 1.00
36	712081	2	Shoulder Bolt 5/16-18 x .75
37	712099PLT	2	Shoulder Bolt 1/2 x 1/2
38	712310	6	WSR-Flat .52 x .87 x .06 PL
39	712680	4	Nut-Hex 5/16 -18 SS
40	713045	1	Bolt HH 3/8-16 x 1.75 #5
41	713048	1	Bolt HH 3/8-16 x 2.50 #5
42	762107	2	Spacer 1.00 x 1.25 x .25
43	762340	2	Bushing .502 x .625 x .270 STL
44	809247	2	Spacer .442 x .50 x .312
45	827110	2	Caster 5"
46	832829	2	Nut-U Type 5/16-18

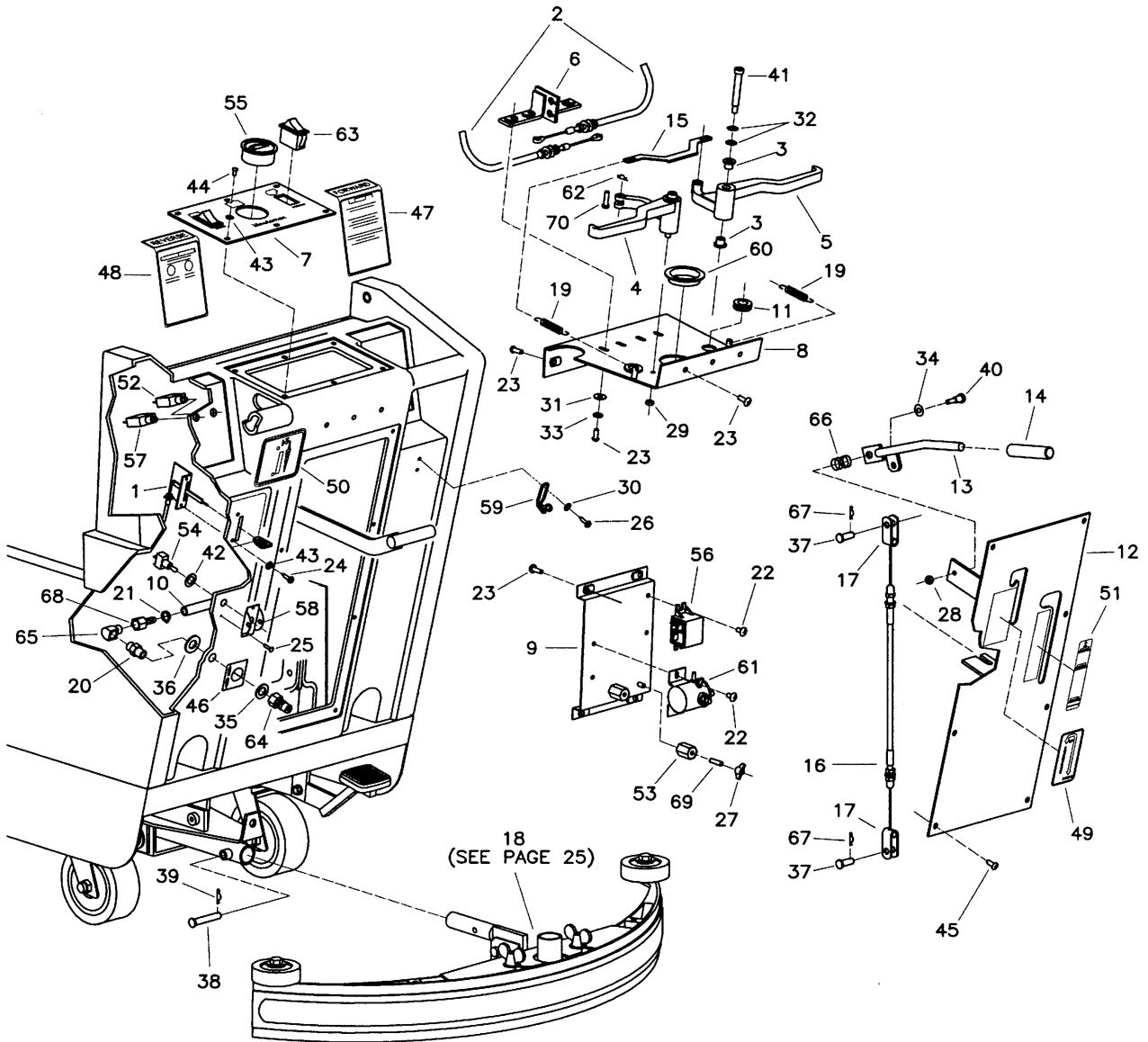
Brush Driven



Parts List

Item	Part No.	Qty.	Description	Item	Part No.	Qty.	Description
1	210066	2	Drive Hub Retainer Bolt	43	710986	8	SC 3/8-16 x 1.00 Zinc
2A	260002	2	Pad Holder-26B	44	711128	1	SCR-ST-B Hi-Lo 8 x .62 Zinc
2B	260003	2	Brush Feed Thru Bassine	45	711160	3	SCR-HI/LO #10 x 5/8 Zinc
2C	260004	2	Brush 26B Nylon	46	711161	2	SCR-HI/LO #10 x 3/4 Zinc
2D	260005	2	Brush Poly-Grit 26B	47	711203	6	Bolt-HH 1/4-20 x .62
2E	260006	2	Brush Strata-Grit 26B	48	711210	2	Bolt-HH 1/4-20 x 1.25 STL Zinc
3	260009	1	Battery Tray	49	711228	2	Bolt-HH 5/16-18 x .75 STL Zinc
4	260030	8	Bushing .5015 x .628 x .375 OI	50	711316	2	Nut-Hex 1/4-20 ST PL
5	260036	12	Pin, Retainer	51	711334	2	Nut-Hex 1/2-13 ST PL
6	260038PTD	1	Motor Mount Weldment R.H.	52	711350	4	Nut-Hex Nyloc 10-32
7	260039PTD	1	Motor Mount Weldment L.H.	53	711368	2	Wing Nut Nyloc 1/4-20 PL
8	260041	13	Bushing-FLG .502 x .750 x .375	54	711375	3	Nut-Nyloc 3/8-16 1/2 Nut
9	260042	1	Actuator Bar Weldment	55	711425	9	Nut-Flanged Wizz 1/4-20
10	260049	4	Linkage Bar	56	711505	11	WSR-Flat 1/4
11	260053	2	Cable Push/Pull	57	711510	1	WSR-Flat .50 x 1.37 x .10
12	260066	2	Bushing-FLG .377 x .687 x .406	58	711517	2	WSR-Flat .77 x 1.37 x .03
13	260068	1	Spacer, Spring	59	711524	2	WSR-Wave .52 x .87 x .01
14	260076	1	Bracket Anderson Plug	60	711535	6	WSR-Helical 1/4
15	260077	1	Motor Frame Weldment	61	711545	2	WSR-Helical 5/16
16	260114	2	Linkage Weldment	62	711713	14	Ret Ring-E Ext .50
17	260123	1	Cable Bracket Weldment L.H.	63	711717	2	Ret Ring-E Ext .37
18	260124	1	Cable Bracket Weldment R.H.	64	712129	2	SCR-TR 1/4-20 x 1.00 HWH
19	260137	1	Spring Comp .960 x 2.00 Zinc	65	712301	2	WSR-Flat .37 x .87 x .06 (Wide)
20	260150	1	Battery Liner	66	712310	25	WSR-Flat .52 x .87 x .06 PL
21	260159	1	Hose Vac 1.5 x 78" Wireloc	67	712545	4	SCR-MC 10-32 x .87 SS
22	260175	1	Cable Conduit	68	712667	1	Nut-Hex Nyloc 1/4-20 SS
23	260183	1	Nut 1/4 NPT NYL	69	740132	2	Insulator (Glastic)
24	260193	1	Solution Hose 3/8 Nylobr	70	740159	1	Circuit Brkr-175 Red Housing
25	260194	1	Pressure Hose 3/8 x 50	71	740209	2	Gearmotor 24V 17B
26	260203	1	Clamp Hose 102120 Murray	72	740225	1	Vac Motor 6515 24V
27	260214	2	Tank Cable Assembly 260	73	762073	1	Bushing .259 x .375 x .265
28	260224	1	Drain Hose 1/4 x 18 Silicone	74	762256PLT	2	Nut Adj LH Zinc PLT
29	260315	1	Lift Cable Bracket	75	809444	1	Clip Cord
30	260377	1	Squeegee Cable	76	828264	1	Washer Cup
31	290017	1	Molded Vac Motor Gasket	77	828490	1	Crimp Clamp 140R
32	320248	2	Clevis, Slotted	78	829067	2	Crimp Clamp 560R
33	320271	1	Fitting PP 90 3/8MPT 3/8HOSE	79	832996	1	Terminal Block 2 Pole VDE
34	320272	2	Nozzle Body Lock Nut	80	833191	1	Hose Rubber Flex 2 x 9
35	320273	1	Hose Shut-Off Clamp	81	833265PLT	1	Threaded Spacer PLT Zinc
36	364-816	1	Nut-Nyloc 1/2-13 Half	82	833299	1	Pump 100 PSI 24V DC
37	380064	1	Foam Ring	83	833325	4	Fitting Nylon 90 1/4MPT 3/8HOSE
38	430035	2	Drive Hub	84	833638	2	Brass Stud
39	450038-H	2	Z-Bracket 5.7 VDE Zinc	85	833725	2	Clip-T
40	450076	4	Crimp Clamp 185R SS	86	840011	1	Vac Motor Cover, Top
41	710180	2	SCR-MC 1/4-20 x .75 Zinc	87	840012	1	Vac Motor Cover, Bottom
42	710823	2	SCR-SC 1/4-20 x .50 Nylon				

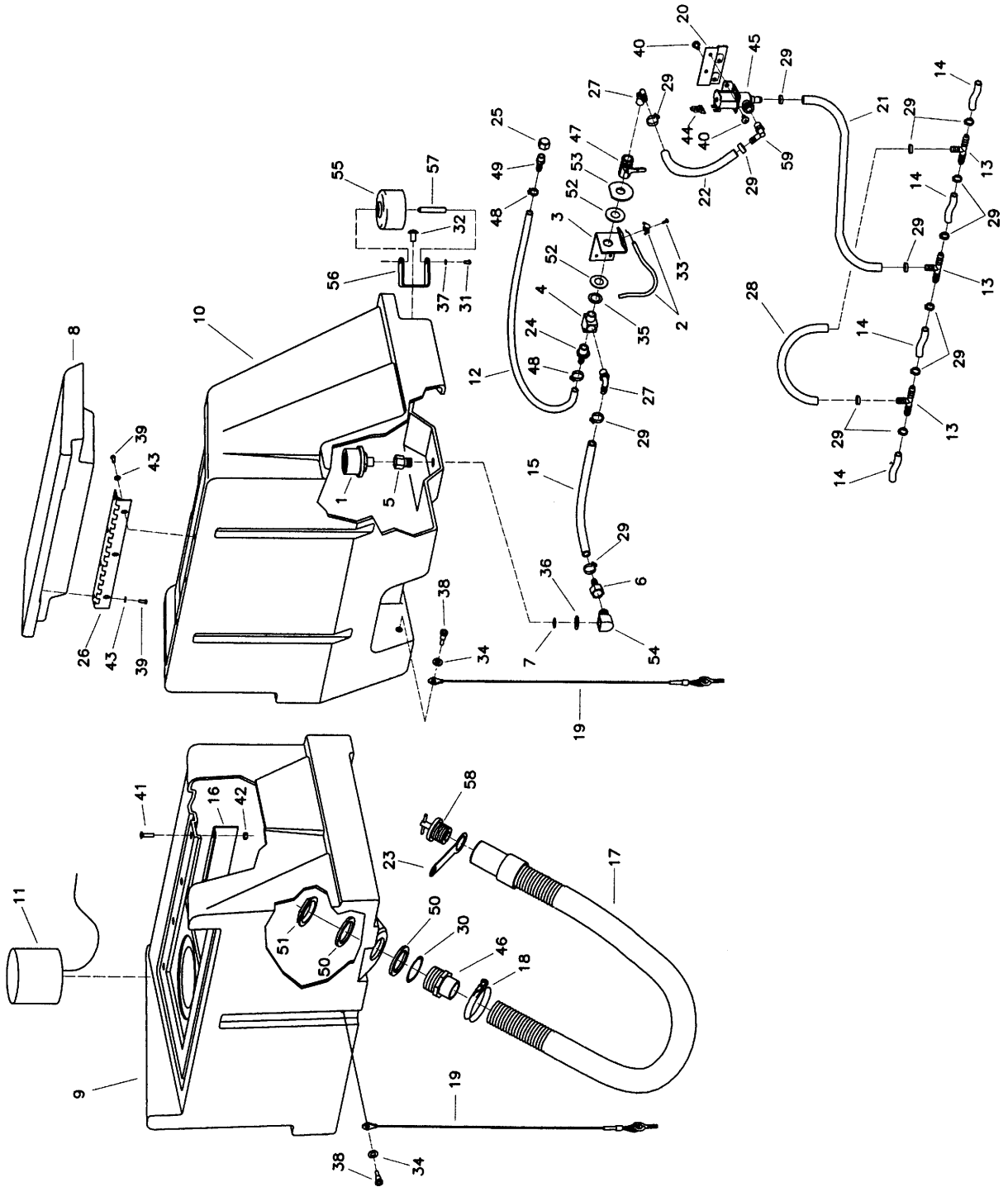
Brush Driven



Parts List

Item	Part No.	Qty.	Description	Item	Part No.	Qty.	Description
1	210045	1	Cable Solution Control	36	711595	1	WSR-Flat .59 x 1.18 x .09
2	260053	2	Cable Push/Pull	37	711668	2	Clevis Pin 3/8 x 1 11-141
3	260066	4	Bushing-FLG .377 x .687 x .406	38	711671	1	Clevis Pin .31 x 2.13 11-110
4	260069MCH	1	Left Handle Machined	39	711808	1	Pin-Hairpin Cotter #13
5	260070MCH	1	Right Handle Machined	40	712070	1	Bolt-Shoulder 5/16 x 3/4 x 1/4
6	260081	1	Cable Mount Weldment	41	712100	2	Bolt-Shoulder 3/8 x 2.25
7	260084BDSP	1	Dashboard, 260BD Screen Printed	42	712310	1	WSR-Flat .52 x .87 x .06 PL
7CE	260084BCEDSP	1	Dashboard, 260BD CE Screen Printed	43	712320	8	WSR-Nylon .22 x .45 x .04 NYL
8	260099	1	Control Lever Mounting Bracket	44	712540	6	SCR-MC 10-24 x .37 SS TH
9	260173	1	Electrical Box MTG	45	712822	8	SCR-MC TR HD 10-24 x .50 SS
10	260194	1	Pressure Hose 3/8 x 50"	46	715144	1	Decal Aux. Pump (175)
11	260274	2	Grommet Z-421	47	715601	1	Decal Forward 260
12	260284	1	Rear Panel Asy 260TD	48	715602	1	Decal Reverse 260
13	260286	1	Squeegee Handle Weldment	49	715603	1	Decal Squeegee Lift 260
14	260291	1	Handle Grip 260TD	50	715604	1	Decal Solution 260
15	260325	1	Handle Bracket	51	715605	1	Decal Brush Position
16	260337	1	Squeegee Cable	52	740131	1	Circuit Breaker 70 amp Push Button
17	320248	2	Clevis, Slotted	53	740132	2	Insulator (Glastic)
18	320297	1	320 Squeegee Assembly New	54	740188	1	Switch-20 amp 1.5HP
19	430051	2	Spring-Return .313 x .438 x 2.	55	740216	1	Gauge Battery Condition
20	450059	1	Fitting Brass 1/4MPT 1/4MPT	56	740241	1	Contacto 24V 50 amp
21	450076	1	Crimp Clamp 185R SS	57	740247	1	Circuit Breaker 30 amp Push Button
22	710178	4	SCR-MC TR HD 1/4-20 x .50 Zinc	58	760277	1	Switch Guard
23	710180	17	SCR-MC 1/4-20 x .75 Zinc	59	760286	1	Wire Formed Hook
24	711125	2	SCR-ST-B 10 x .50 NI	60	762400	1	Bushing Heyco 1-5/8 x 2-1/8
25	711128	2	SCR-ST-B HI/LO 8 x .62 Zinc	61	788147	1	Solenoid 24VDC
26	711161	2	SCR-HI/LO #10 x 3/4 Zinc	62	809311	2	Cotter Pin 7/64 x 1
27	711368	2	Wing Nut Nylon 1/4-20 PL	63	809754	2	Switch Rocker
28	711373	1	Nut-Nyloc 1/4-20	63CE	740711CE	2	Switch Dreefs w/Splashguard
29	711420	2	Nut-Hex Jam 5/16-18 STPL	64	828368	1	BH2-61 Male Coupler
30	711503	2	WSR-Flat #10	65	831306	1	Fitting Brass 90 1/4MPT 1/4MPT
31	711505	4	WSR-Flat 1/4	66	833102	1	Spring Knob .60 x .73 x 1.75 Z
32	711523	4	WSR-WAVE .37 x .68 x .08	67	833374	2	Pin-Hairpin Cotter 3/8
33	711544	4	WSR-Helical 1/4	68	833473	1	Fitting Brass 1/4FPT x 3/8HOSE
34	711575	1	WSR-Flat .31 x .75 x .06 STL	69	833638	2	Brass Stud
35	711594	1	WSR-Flat .56 x .88 x .03 Nickel	70	881002	2	Clevis Pin 11-083 Zinc

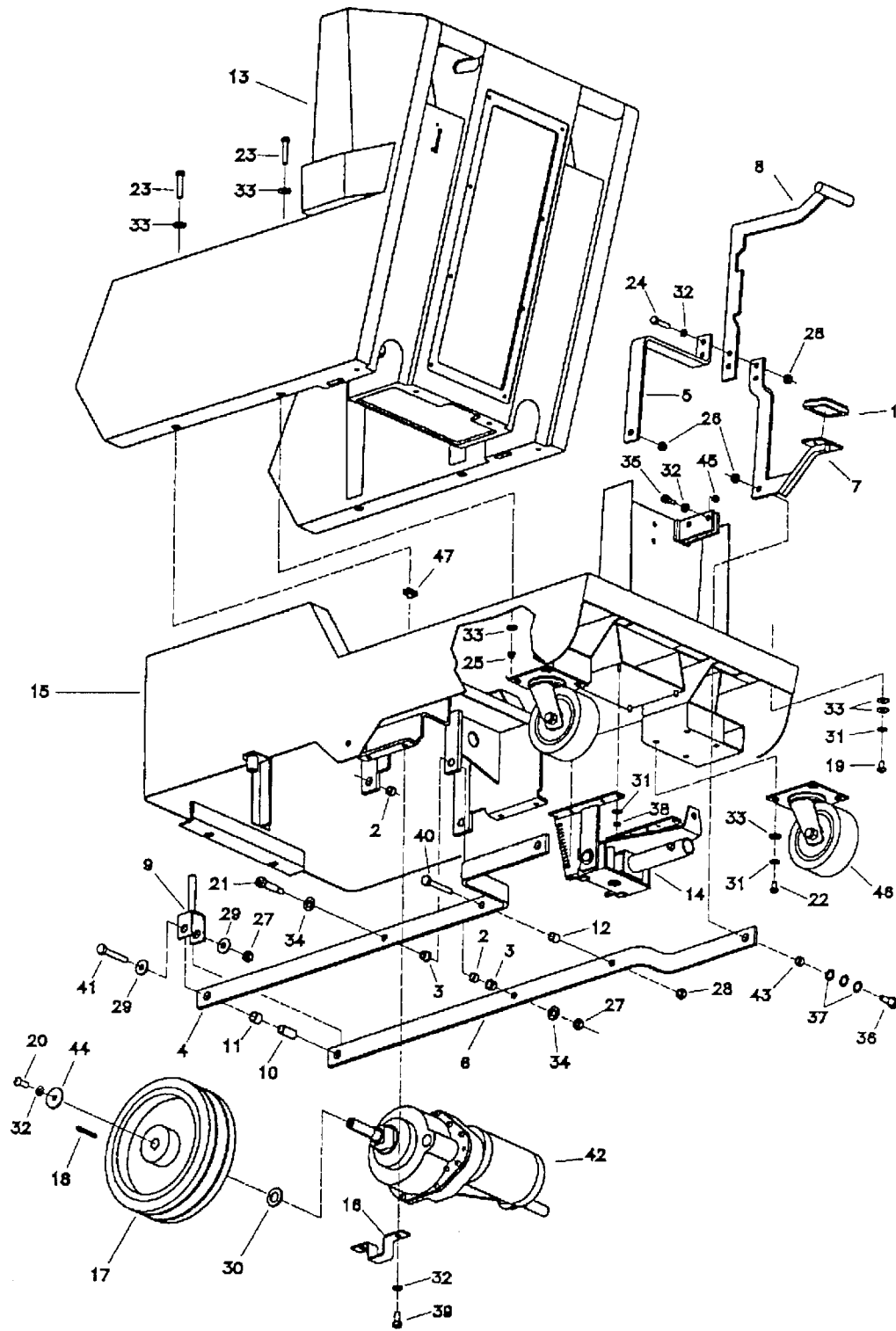
Traction Driven



Parts List

Item	Part No.	Qty.	Description
1	130118	1	Solution Strainer M3-40
2	210045	1	Cable Solution Control
3	210370	1	Solution Valve Bracket
4	210408	1	Fitting Brass Tee 3/8 MPT 3/8 FPT
5	210409	1	Fitting Brass 3/8 MPT 3/8 FPT
6	210410	1	Fitting Brass 3/8 FPT 3/8 Hose
7	210414	1	O-Ring 2-113
8	260029B	1	Solution Lid Burgundy
9	260091	1	Recovery Tank 260 Lt Gray
10	260092	1	Solution Tank 260 Lt Gray
11	260156	1	Float Assembly
12	260162	1	Hose - Solution Dump 38"
13	260178	3	Fitting Nylon T 3/8 Hose
14	260179	4	Hose Nylobraid 3/8 x 2.38"
15	260182	1	Solution Hose C/L 18"
16	260184	1	Support Angle
17	260202	1	Hose Assembly 260B New Style
18	260203	1	Hose Clamp 102120 Murray
19	260214	2	Tank Cable Assembly
20	260215	1	Bracket Water Valve
21	260216	1	Solution Reinforced 3/8 x 14.75
22	320254	1	Solution Reinforced
23	320269	1	Strap, Drain Plug Retaining
24	342430	1	Fitting Brass 3/8 MPT x 3/8 HOSE
25	430114	1	Fitting Nylon Cap 1/4 FPT
26	450021	1	Hinge
27	450040	2	Elbow PLT 3/8 MPT 3/8 Barb
28	450055	1	Hose Nylon 3/8 ID x 9"
29	450076	15	Crimp Clamp 185R SS
30	450081	1	WSR-SS 1.908 x 2.41 x .03 SS
31	710353	2	SCR-MC 10-32 x .37 Zinc
32	710985	2	SC 3/8-16 x .62
33	711124	1	SCR-ST-B 10 x .37 NI
34	711506	2	WSR-Flat 5/16 (Narrow) ST PL
35	711512	1	WSR-Flat .75 x 1.37 x .08
36	711513	1	WSR-Flat .689 x 1.06 x .029 SS
37	711553	2	WSR-Internal Lock 10
38	712041	2	Bolt-Shoulder 1/4-20 x .44 x .3
39	712540	7	SCR-MC 10-24 x .50 SS TH
40	712560	4	SCR-MC 1/4-20 x .50 SS NYL
41	712563	4	SCR-MC 1/4-20 x 1.00 SS
42	712667	4	Nut-Hex Nyloc 1/4-20 SS
43	712764	7	WSR-Flat #10 SS
44	740482	1	Diode Assembly
45	740493	1	Water Valve 24VDC
46	760220MCH	1	1.5 Adapter MCH
47	809413MCH	1	Valve, Solution
48	828490	2	Clamp-Crimp 140R
49	828952	1	Fitting PP 1/4MPT 3/8Barb
50	828970	2	WSR-Neop 1.87 x 2.4 x .125
51	828971	1	Nut 1 1/2 Pipe Thread
52	828975	1	WSR-Neoprene .75 x 1.5 x .09
53	829463	1	SS Washer
54	830062	1	Fitting Brass 90 3/8 MPT 3/8 FPT
55	832896	2	Guide Wheel
56	832949	2	Bracket, Bumper
57	833254	2	Bumper Wheel Axle
58	833316	1	Drain Plug
59	833325	1	Fitting Nylon 90 1/4MPT x 3/8Barb

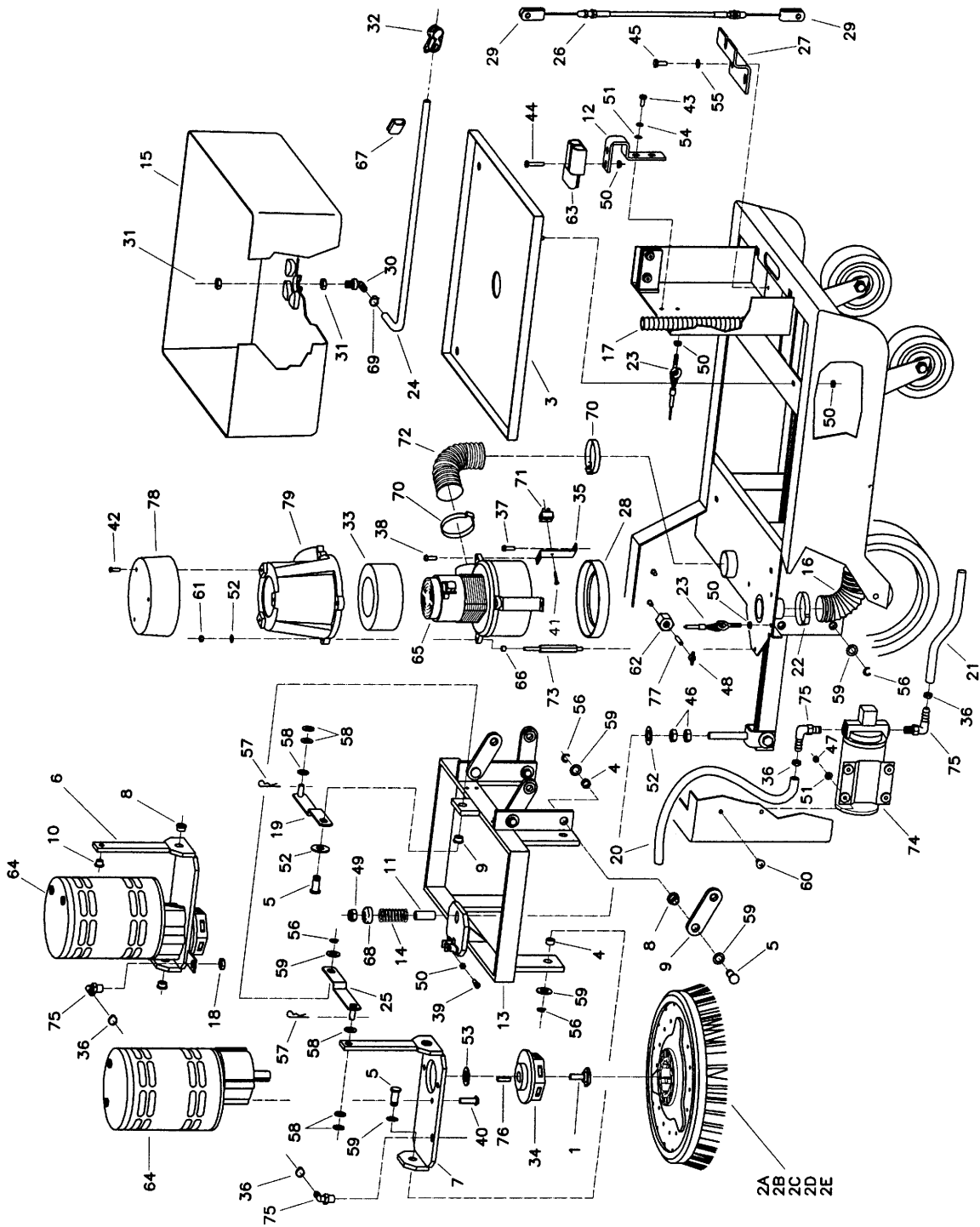
Traction Driven



Parts List

Item	Part No.	Qty.	Description
1	210142	1	Pedal Pad
2	260030	5	Bushing-.5015 x .628 x .375 OI
3	260041	2	Bushing-FLG .502 x .750 x .375
4	260043	1	Lift Arm, Left Side
5	260046	1	Pedal Brace
6	260044	1	Lift Arm, Right Side
7	260054	1	Pedal Weldment
8	260055PTD	1	Lift Handle Weldment
9	260075	1	Yoke Weldment
10	260125	1	Bushing, Yoke .407 x 1.687 STL
11	260128	1	Spacer-Yoke
12	260141	1	Spacer-Lift Arm
13	260256	1	Base 260TD Char Grey
14	260317	1	Squeegee Mech. Assy.
15	260360	1	Mainframe MMN 260TD
16	260366	2	Transaxle Bracket 260TD
17	260370	2	Wheel 10 x 2.75 x .75 BORE
18	260371	2	Key 3/16 x 3/16 x 2.00
19	710196	4	SCR-MC 5/16-18 x .75
20	710986	2	SCR 3/8-16 x 1.00 Zinc
21	710992	1	Shoulder Bolt 1/2 x 1.25 x 3/8
22	711228	8	Bolt-HH 5/16-18 x .75 STL Zinc
23	711232	4	Bolt-HH 5/16-18 x 1.50
24	711250	2	Bolt-HH 3/8-16 x 1.25 STL Zinc
25	711374	2	Nut Nyloc 5/16-18
26	711375	2	Nut-Nyloc 3/8-16 1/2NUT
27	711380	2	Nut, Nyloc 3/8-16
28	711439	3	Nut-Flanged Wizz 3/8-16
29	711507	2	WSR-Flat .37 x 1.12 x .06
30	711512	2	WSR-Flat .75 x 1.37 x .08
31	711545	16	Washer Helical 5/16
32	711546	10	Washer Helical 3/8
33	711575	22	Washer Flat .31 x .75 x .06 STL
34	711579	2	WSR-Flat .56 x 1.00
35	712081	2	Shoulder Bolt 5/16-18 x .75
36	712099PLT	2	Shoulder Bolt 1/2 x 1/2
37	712310	6	WSR-Flat .52 x .87 x .06 PL
38	712680	4	Nut-Hex 5/16-18 SS
39	713042	4	Bolt-HH 3/8-16 x 1.00 #5
40	713045	1	Bolt-HH 3/8-16 x 1.75 #5
41	713048	1	Bolt-HH 3/8-16 x 2.50 #5
42	744160	1	Transaxle 13" 24V
43	762340	2	Bushing .502 x .625 x .270 STL
44	809226	2	WSR-Flat .40 x 1.50 x .12
45	809247	2	Spacer .442 x .50 x .312
46	827110	2	Caster 5"
47	832829	2	Nut-U Type 5/16 x 18

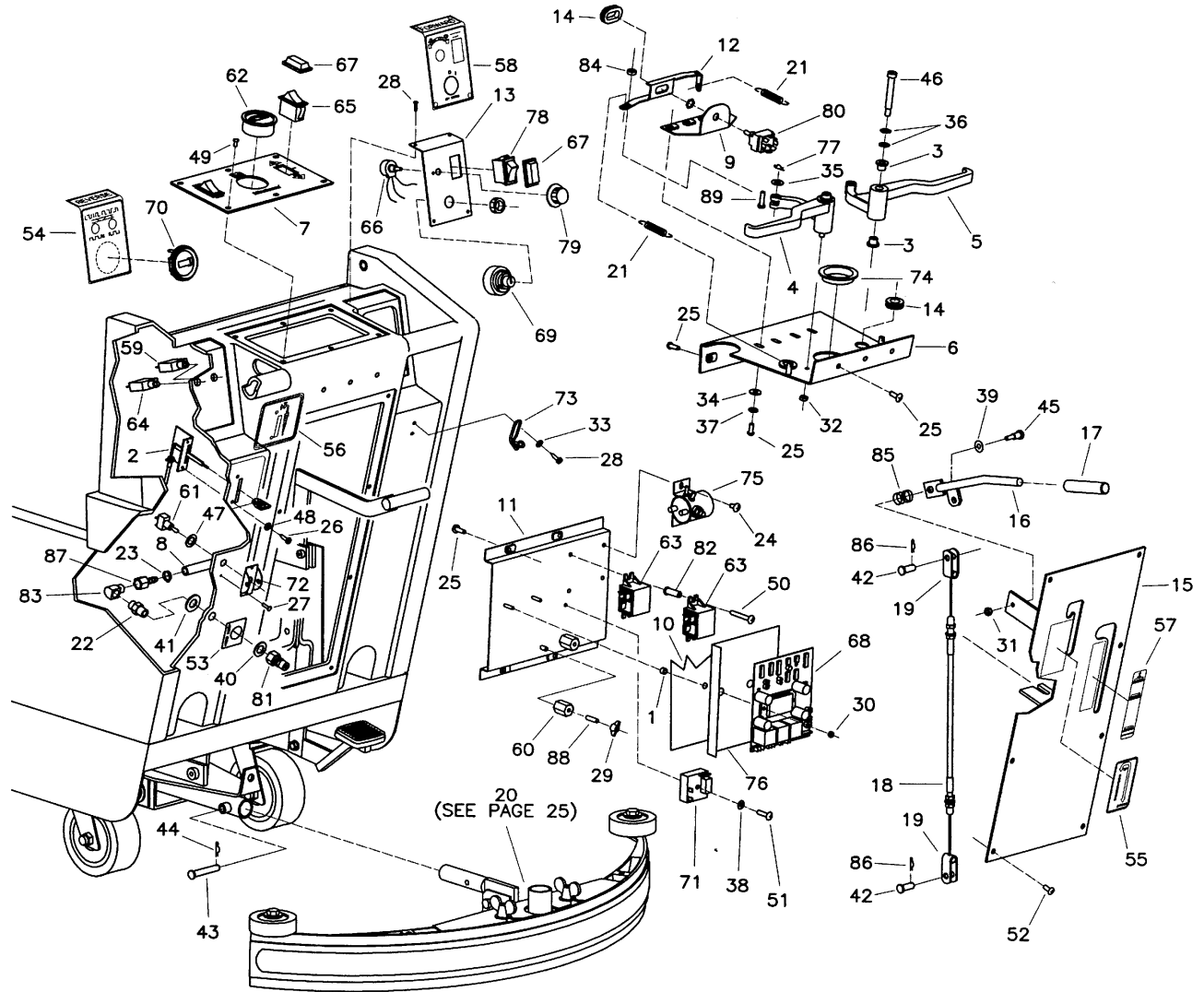
Traction Driven



Parts List

Item	Part No.	Qty.	Description	Item	Part No.	Qty.	Description
1	210066	2	Drive Hub Retainer Bolt	39	710823	2	SC 1/4-20 x .50 Nylon
2A	260002	2	Pad Driver 26B	40	710986	8	SC 3/8-16 x 1.00 Zinc
2B	260003	2	Brush Feed Thru Bassine	41	711128	1	SCR-ST-B Hi/Lo 8 x .62 Zinc
2C	260004	2	Brush 26B Nylon	42	711160	3	SCR Hi/Lo 10 x 5/8 Zinc
2D	260005	2	Brush Polygrit 26B	43	711203	2	Bolt-HH 1/4-20 x .62
2E	260006	2	Brush Stratagrit 26B	44	711210	2	Bolt-HH 1/4-20 x 1.25 STL Zinc
3	260009	1	Battery Tray 14GA	45	711228	2	Bolt-HH 5/16-18 x .75 STL Zinc
4	260030	8	Bushing .5015 x .628 x .375 OI	46	711334	2	Nut-Hex 1/2-13 ST PL
5	260036	13	Pin, Retainer	47	711350	4	Nut Nyloc 10-32
6	260038PTD	1	Motor Mount Weldment R.H.	48	711368	2	Wing Nut Nyloc 1/4-20 PL
7	260039PTD	1	Motor Mount Weldment L.H.	49	364-816	1	Nut-Nyloc 1/2-13 Half
8	260041	13	Bushing-FLG .502 x .750 x .375	50	711425	10	Nut-Flanged Wizz 1/4-20
9	260049	4	Linkage Bar .312 GA	51	711505	7	WSR-Flat 1/4
10	260066	2	Bushing-FLG .377 x .687 x .406	52	711510	2	WSR-Flat .50 x 1.37 x .10
11	260068	1	Spacer, Spring	53	711517	2	WSR-Flat .77 x 1.37 x .03
12	260076	1	Bracket Anderson Plug	54	711544	2	WSR-Helical 1/4
13	260077	1	Motor Frame Weldment	55	711545	2	WSR-Helical 5/16
14	260137	1	Spring Comp .960 x 2.00 Zinc	56	711713	13	Ret Ring-E Ext .50
15	260150	1	Battery Liner	57	711808	2	Pin-Hairpin Cotter #13
16	260159	1	Vac Hose 1.5 x 78" Wireloc	58	712301	6	WSR-Flat .37 x .87 x .06 (Wide)
17	260175	1	Cable Conduit	59	712310	25	WSR-Flat .52 x .87 x .06 PL
18	260183	2	Nut 1/4 NPT Nyl	60	712545	4	SCR-MC 10-32 x .87 SS
19	260187	1	Retainer Bar Weldment R.H.	61	712667	1	Nut-Hex Nyloc 1/4-20 SS
20	260193	1	Solution Hose 3/8 Nylobr	62	740132	2	Insulator (Glastic)
21	260194	1	Pressure Hose 3/8 x 50"	63	740159	1	Circuit Brkr-175 Red Housing O
22	260203	1	Clamp Hose 102120 Murray	64	740209	2	Gearmotor 24V 17B
23	260214	2	Tank Cable Assy. 260	65	740225	1	Vac Motor 6515-13 24V
24	260224	1	Drain Hose 1/4 x 18" Silicone	66	762073	1	Bushing .259 x .375 x .265
25	260250	1	Retainer Bar Weldment L.H.	67	809444	1	Clip Cord
26	260337	1	Squeegee Cable	68	828264	1	Washer Cup
27	260315	1	Lift Cable Bracket 3/16 GA	69	828490	1	Clamp-Crimp 140R
28	290017	1	Molded Vac Motor Gasket	70	829067	2	Clamp-Crimp 560R
29	320248	2	Pin-Clevis, Slotted	71	832996	1	Terminal Block 2POLE VDE
30	320271	1	Fitting PP 90 3/8MPT 3/8HOSE	72	833191	1	Hose Rubber Flex 2 x 9
31	320272	2	Nozzle Body Lock Nut	73	833265PLT	1	Threaded Spacer PLT Zinc
32	320273	1	Hose Shut-Off Clamp	74	833299	1	Pump 100 PSI 24V DC
33	380064	1	Foam Ring	75	833325	4	Fitting Nylon 90 1/4MPT 3/8HOS
34	430035	2	Drive Hub	76	833621	2	Key 1/4 x 1/4 x 1
35	450038-H	2	Z-Bracket 5.7 VDE Zinc	77	833638	2	Brass Stud
36	450076	4	Crimp Clamp 185R SS	78	840011	1	Vac Motor Cover, Top
37	710180	2	SCR-MC 1/4-20 x .75 Zinc	79	840012	1	Vac Motor Cover, Bottom
38	710129	2	SCR-MC 8-32 x .50 Zinc				

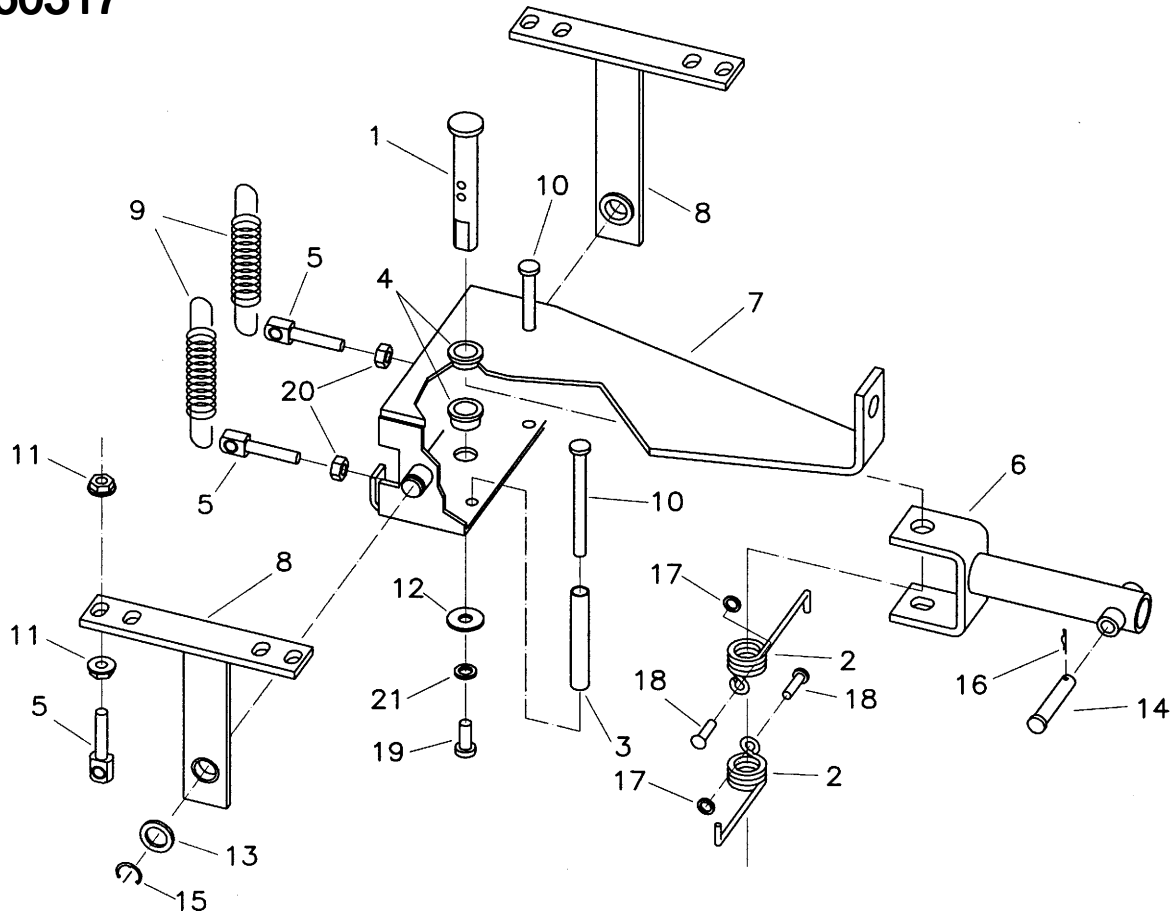
Traction Driven



Parts List

Item	Part No.	Qty.	Description		
1	200340	45	Spacer-SCR Board	712070	1 Bolt-Shoulder 5/16 x 3/4 x 1/4
2	210045	46	Cable Solution Control	712100	2 Bolt-Shoulder 3/8 x 2.25
3	260066	47	Bushing-FLG .377 x .687 x .406	712310	5 WSR-Flat .52 x .87 x .06 PL
4	260069MCH	48	Left Handle Machined	712320	2 WSR-Nylon .22 x .45 x .04
5	260070MCH	49	Right Handle Machined	712540	6 SCR-MC 10-24 x .37 SS TH
6	260099	50	Control Lever Mounting Bracket	712570	2 SCR-MC 1/4-20 x 1.75 SS
7	260084TDSP	52	Dashboard 260TD Screen Printed	712822	8 SCR-MC 10-24 x .87 Zinc
7CE	260084CETDSP	51	Dashboard 260TDCE Screen Printed	712814	1 SCR-MC TR HD 10-24 x .50 SS
8	260194	53	Pressure Hose 3/8 x 50	715144	1 Decal Aux. Pump (175)
9	260198	54	Switch Bracket 260TD	715602	1 Decal Reverse 260
10	260210	55	Moisture Guard SCR 260TD	715604	1 Decal Squeegee Lift 260
11	260253	56	Electrical Panel	715604	1 Decal Solution 260
12	260254	57	Switch Actuator 260TD	715605	1 Decal Brush Position
13	260255	58	Speed Control Bracket 260TD	715608	1 Decal Forward 260TD
13CE	260255CE	59	Speed Control Bracket 260TDCE	740131	1 Circuit Breaker 70 amp Push Button
14	260274	60	Grommet Z-421	740132	2 Insulator (Glastic)
15	260284	61	Rear Panel Asy 260TD	740188	1 Switch 20amp 1.5hp
16	260286	62	Squeegee Handle Weldment	740216	1 Gauge Battery Condition
17	260291	63	Handle Grip 260TD	740241	2 Contactor 24V 50amp
18	260337	64	Squeegee Cable	740247	1 Circuit Breaker 30amp Push Button
19	320248	65	Clevis, Slotted	740736	1 Switch - 3 Position
20	320297	65CE	320 Squeegee Assembly New	742102	1 Switch 23670C4D
21	430051	66	Return Spring .313 x .438 x 2.	740804	1 Potentiometer Assembly
22	450059	67	Fitting Brass 1/4MPT 1/4MPT	740811	3 Switch Boot CE
23	450076	68	Crimp Clamp 185R SS	740944-1	1 SPD Control 24V 1203A225
24	710178	69	SCR-MC TR HD 1/4-20 x .50 Zinc	741005	1 Keyswitch On-Off
25	710180	70	SCR-MC 1/4-20 x .75 Zinc	741007	1 Hour Meter 10-80 VDC
26	711125	71	SCR-ST-B 10 x .50 Ni	741037	1 Relay-True Off 24V 5sec
27	711128	72	SCR-ST-B HI/LO 8 x .62 Zinc	760277	1 Switch Guard
28	711161	73	SCR-HI/LO 10 x 3/4 Zinc	760286	1 Wire Formed Hook
29	711368	74	Wing Nut Nyloc 1/4-20 PL	762400	1 Heyco Bushing 1-5/8 x 2-1/8
30	711372	75	Nut-Nyloc 8-32	788147	1 Solenoid 24VDC
31	711373	76	Nut-Nyloc 1/4-20	805637	1 SCR Insulator
32	711420	77	Nut-Hex Jam 5/16-18 STPL	809311	2 Cotter Pin 7/64 x 1
33	711503	78	WSR-Flat #10	809754	2 Switch Rocker
34	711505	78CE	WSR-Flat 1/4	740711CE	2 Switch Dreefs w/Splashguard
35	711506	79	WSR-Flat 5/16 (Narrow) STPL	809874	1 Knob Speed Control
36	711523	80	WSR-WAVE .37 x .68 x .08	827060	1 Switch-Drive
37	711544	81	WSR-Helical 1/4	828368	1 BH2-61 Male Coupler
38	711553	82	WSR-Internal Lock #10	828935	2 Spacer
39	711575	83	WSR-Flat .31 x .75 x .06 STL	831306	1 Fitting Brass 90 1/4MPT 1/4FPT
40	711594	84	WSR-Flat .56 x .88 x .03 Nickel	832015	2 Spacer .38 x .5 x .14
41	711595	85	WSR-Flat .594 x 1.18 x .09	833102	1 Spring Knob .60 x .73 x 1.75 Z
42	711668	86	Clevis Pin 3/8 x 1 11-141	833374	2 Pin Hairpin Cotter 3/8
43	711671	87	Clevis Pin .31 x 2.13 11-10	833473	1 Fitting Brass 1/4FPT x 3/8HOSE
44	711808	88	Pin-Hairpin Cotter #13	833638	2 Brass Stud
		89		881002	2 Clevis Pin 11-083 Zinc

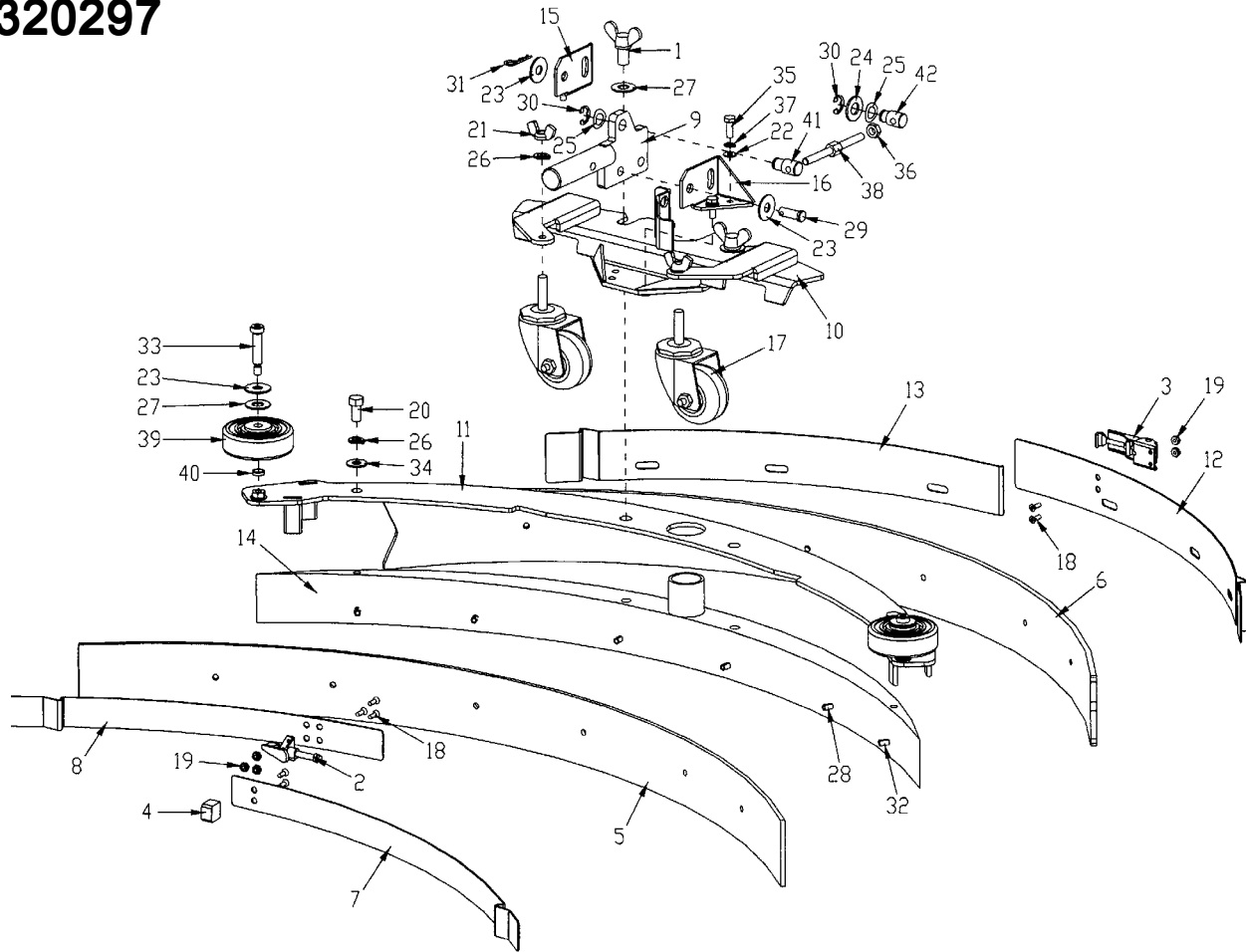
Squeegee Mechanism Assembly 260317



Parts List

Item	Part No.	Qty.	Description
1	210375	1	Swivel Pin
2	210391	2	Torsion Spring .563 x 2.595 SS
3	210400	2	Spacer Tube
4	260041	2	Bushing-FLG .502 x .750 x .375
5	260292	4	Swing Bolt Zinc Plated
6	260312	1	Yoke Weldment 260
7	260314	1	Spring Housing Weldment
8	320008	2	Pivot Bracket Asy
9	430051	2	Return Spring .313 x .438 x 2.0
10	712592	2	SCR-MC TH 1/4-20 x 3.00 SS
11	711425	2	Nut-Flange Wizz 1/4-20
12	711504	1	WSR-Flat 1/4 SS
13	711517	2	WSR-Flat .77 x 1.37 x .03
14	711671	1	Pin Clevis .31 x 2.12 11-10
15	711715	2	Ret Ring-E Ext .75
16	711808	1	Pin-Hairpin Cotter #13
17	712320	2	WSR-Nylon .22 x .45 x .04 NYL
18	712536	2	SCR-MC 10-24 x .62 SS
19	712562	1	Bolt-HH 1/4-20 x .75 SS
20	712665	2	Nut-Hex 1/4-20 SS
21	712758	1	WSR-Helical 1/4 SS

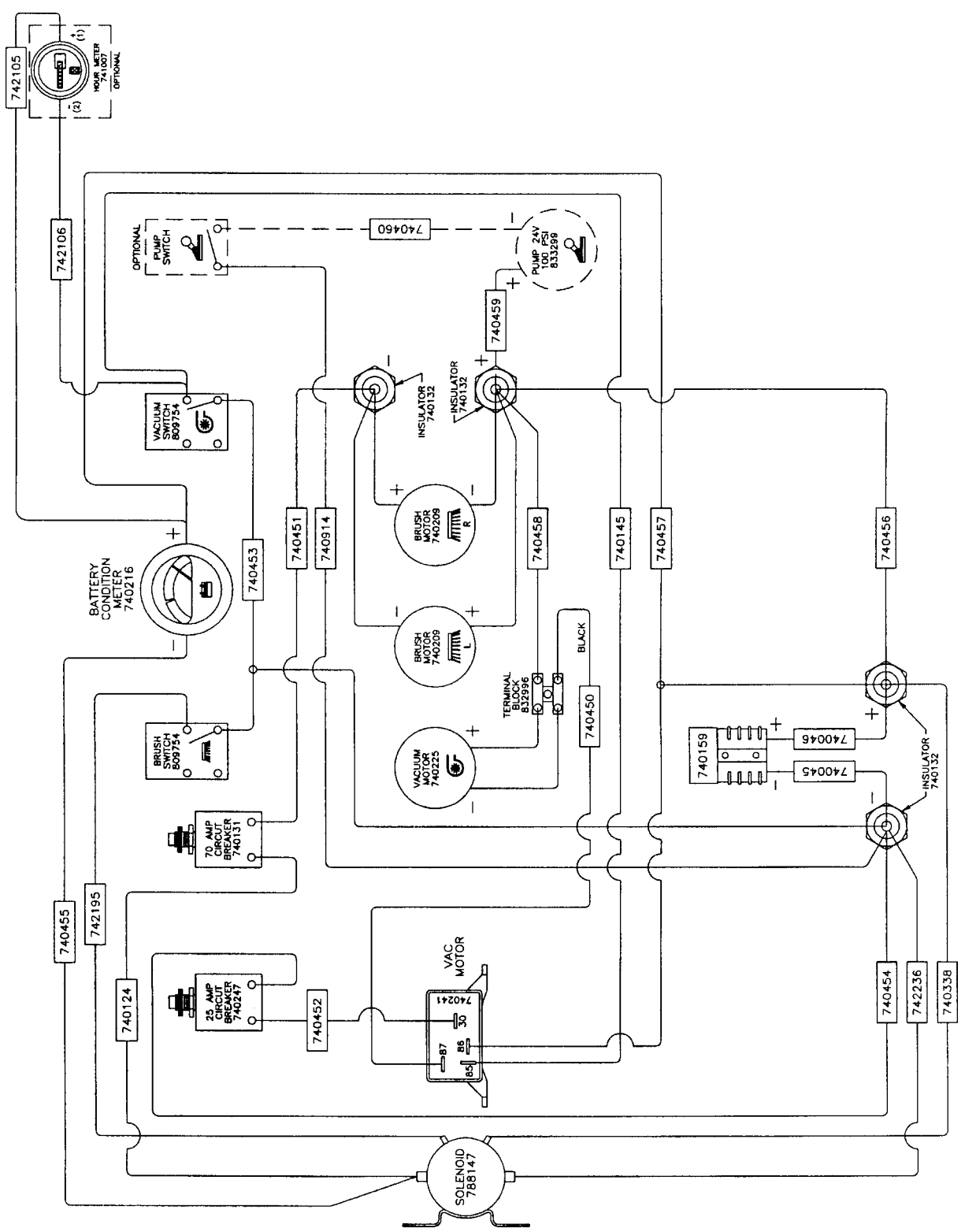
SQUEEGEE ASSEMBLY COMPLETE 320297



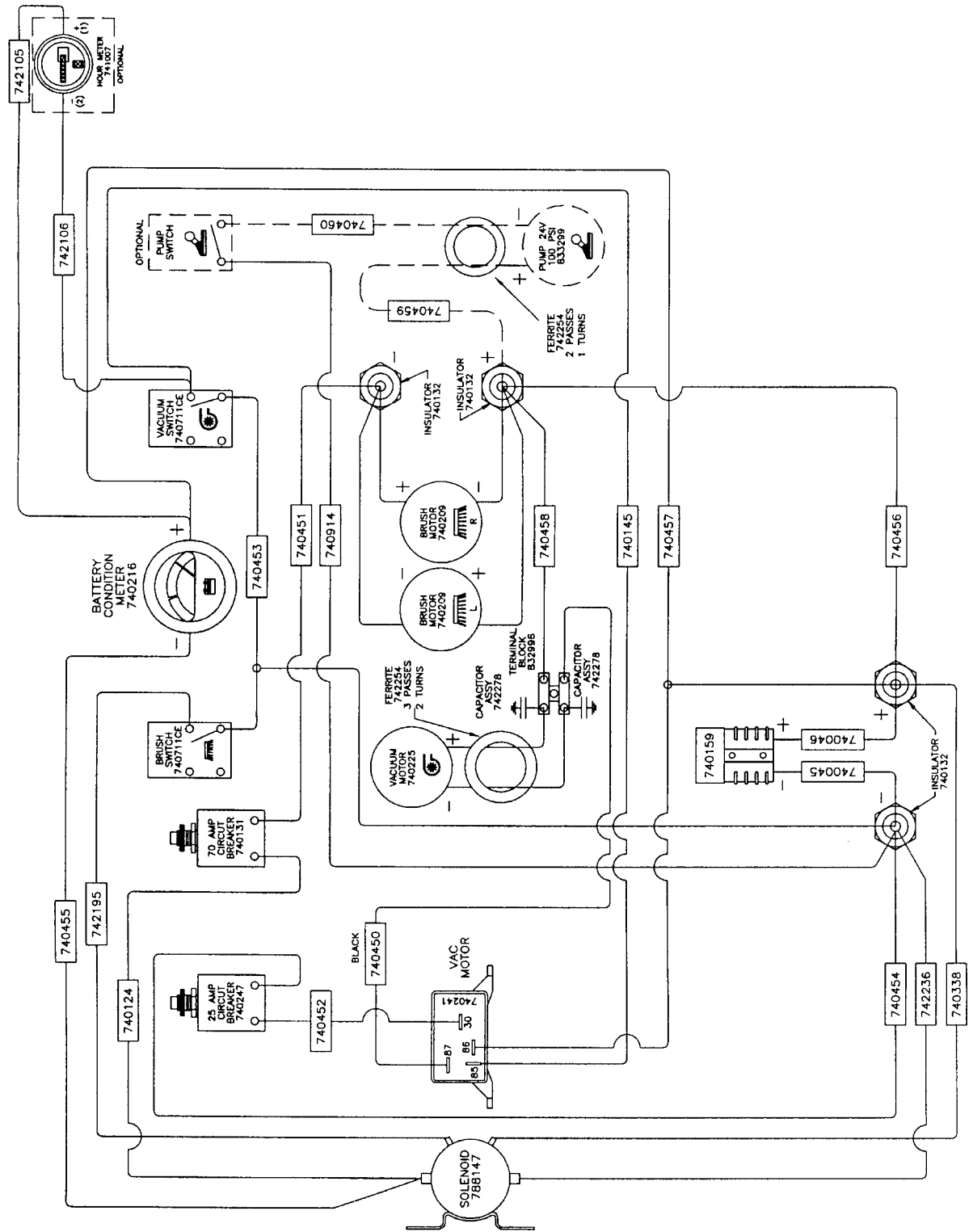
Parts List

ITEM	PART NO.	REQ'D	DESCRIPTION	ITEM	PART NO.	REQ'D	DESCRIPTION
1	220249	2	WING BOLT 1/2-13 X .75"	22	711504	4	WSR-FLAT 1/4 ID SS
2	281074	1	SQUEEGEE TOGGLE CLAMP, 2800	23	711507	4	WSR-FLAT .37 X 1.12 X .06
3	281075	1	SQUEEGEE LATCH, 2800	24	711509	1	WSR-FLAT 1/2 (.54X1.082X.087)
4	281740	1	STOP BAR	25	711524	2	WSR-WAVE .52 X .87 X .01
5	320014	1	SQUEEGEE FRONT BLADE 320	26	711546	4	WSR-HELICAL 3/8
6	320015	1	SQUEEGEE REAR BLADE 320	27	711592	4	WSR NYLON .5 X 1.06 X .06
7	320021	1	STRAP - FRONT STOP 320	28	711658	8	ROLL PIN 1/4"X1.00"
8	320022	1	STRAP-FRONT CLAMP 320	29	711668	1	CLEVIS PIN, 3/8X1 11-141
9	320154	1	SQUEEGEE MOUNT WELD'T NEW	30	711713	2	RETAINING RING - "E" TYPE EXT .500
10	320289	1	SQ. MTG BRKT WELDM'T	31	711808	1	COTTER PIN-HAIR #13
11	320293	1	TOP PLATE WELDMENT, 320	32	711904	2	ROLL PIN 1/4"X1.50"
12	320310	1	STRAP-REAR LATCH 320	33	712091	2	SHOULDER BLT 3/8 X 1.50
13	320313	1	STRAP-CATCH 320	34	712301	2	WSR-FLAT .87 X .38 X .06
14	320314	1	320 SQ CASTING MCHD, NEW	35	712562	4	BOLT-HH 1/4-20X3/4 SS
15	383424	1	MOUNTING BRACKET-RIGHT	36	712680	1	NUT-HEX 5/16-18 SS
16	383425	1	MOUNTING BRACKET-LEFT	37	712758	4	WSR-HELICAL 1/4 SS
17	430325	2	CASTER WHEEL 3/8"-16 X 1.500	38	750689	1	ADJUSTMENT STUD
18	710530	7	SCR-MC FL HD 8-32 X .50 BRS	39	808829	2	WHEEL,TRUCK
19	711026	5	NUT, HEX 8-32 NYLOC SS	40	832015	2	SPACER .38 X .50 X .140
20	711241	2	SCR-HEX 3/8 -16X .75" ZP	41	762022PLT	1	NUT, ADJUSTING (LH)
21	711367	2	NUT- WING 3/8-16 ST PL	42	762257PLT	1	NUT, ADJUSTING (RH)

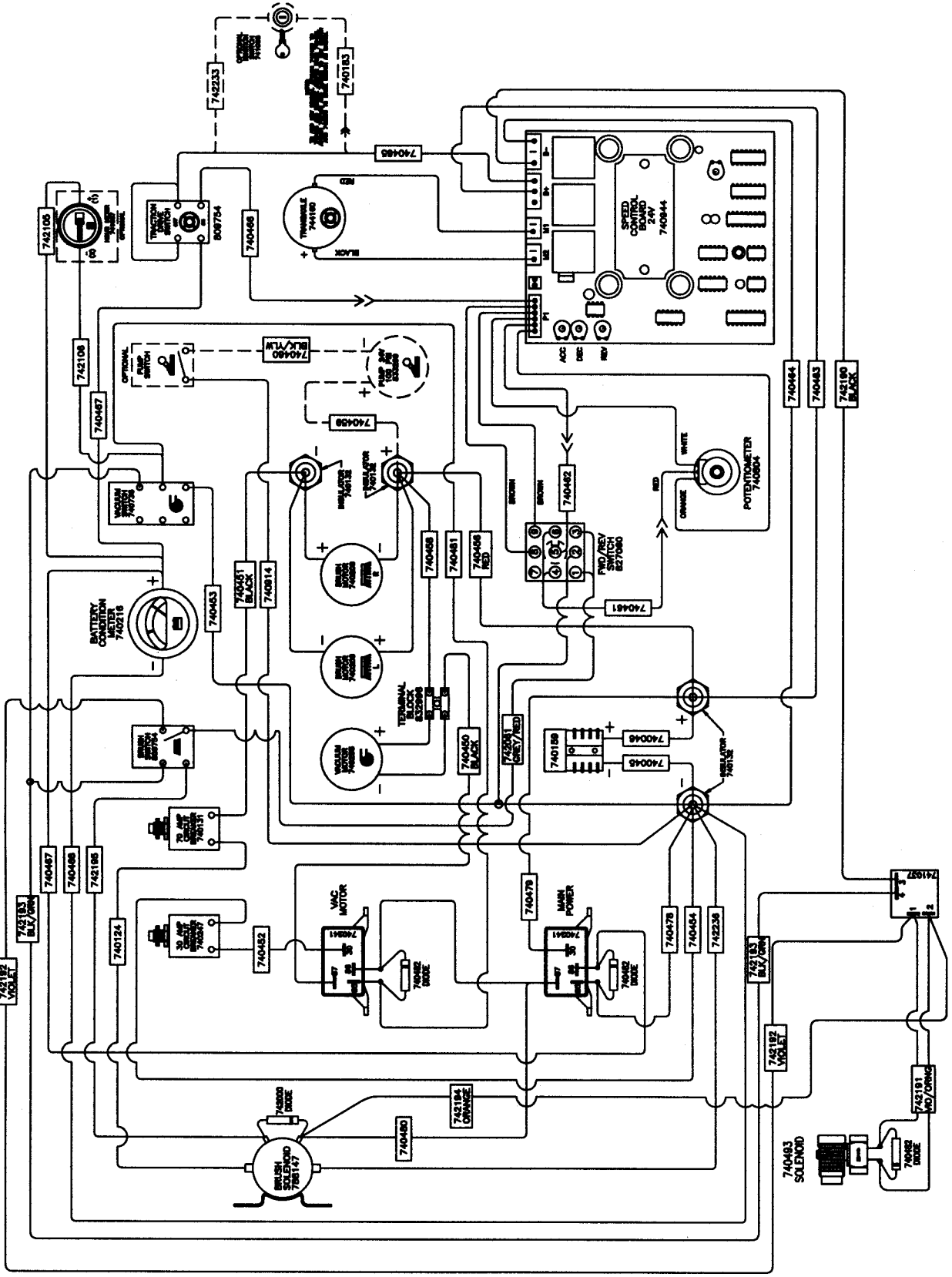
WIRING DIAGRAM BRUSH DRIVE STANDARD MODEL



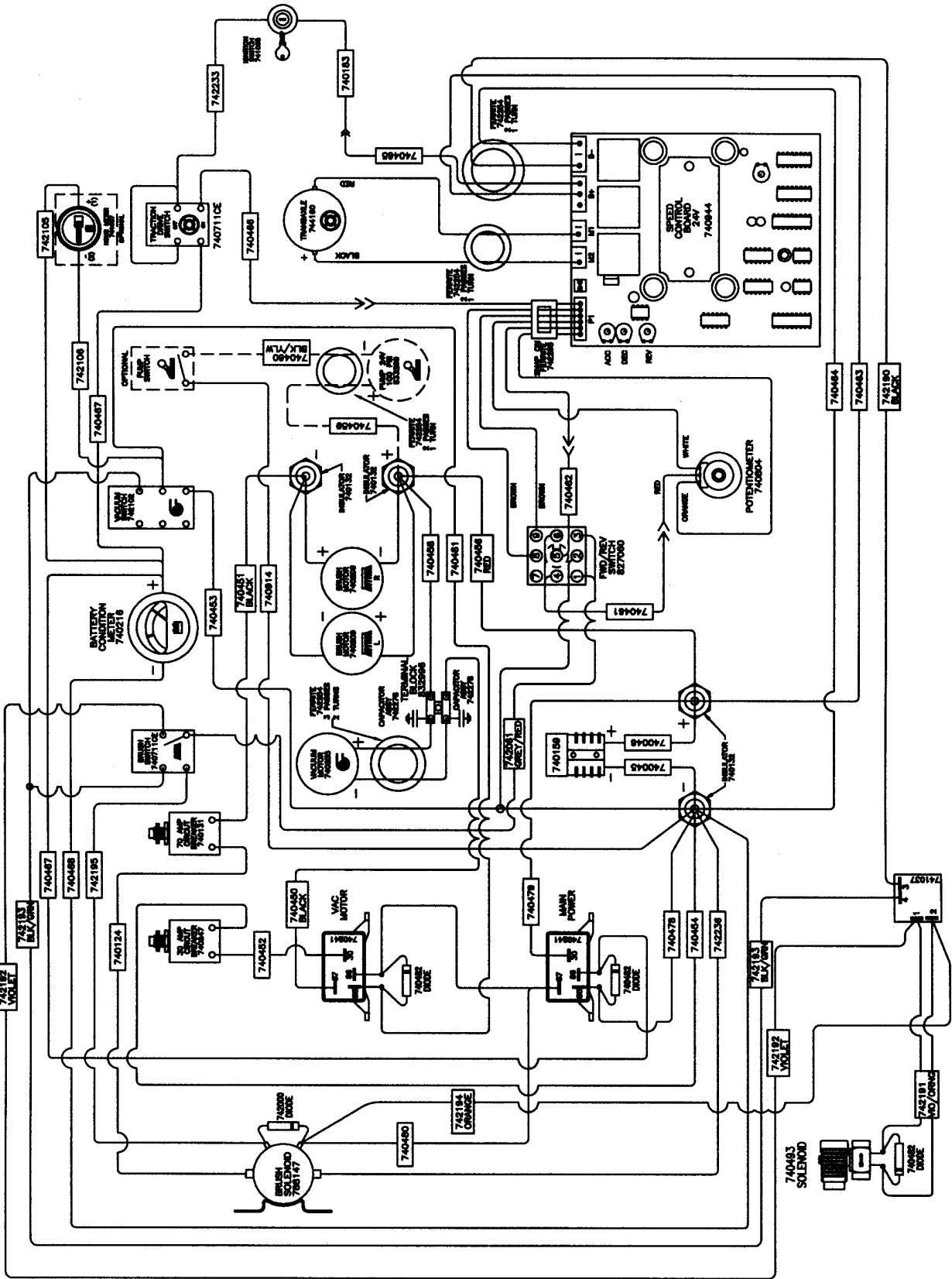
WIRING DIAGRAM BRUSH DRIVE CE MODEL



WIRING DIAGRAM TRACTION DRIVE STANDARD MODEL



WIRING DIAGRAM TRACTION DRIVE CE MODEL



LIMITED WARRANTY

Minuteman International, Inc. warrants to the original purchaser/user that this product is free from defects in workmanship and materials under normal use and service for a period of three years from date of purchase. In addition, Minuteman International, Inc. will, at its option, honor labor warranty claims for the first 12 months from date of sale, provided such claims are submitted through and approved by factory authorized repair stations. Minuteman International, Inc. will, at its option, repair or replace without charge, except for transportation costs, parts that fail under normal use and service when operated and maintained in accordance with the applicable operation and instruction manuals.

This warranty does not apply to normal wear, or to items whose life is dependent on their use and care, such as belts, cords, switches, hoses, rubber parts, electrical motor components or adjustments. Parts not manufactured by Minuteman International, Inc. such as engines, batteries, battery chargers, hydraulic pumps, and tires are covered by and subject to the warranties and/or guarantees of their manufacturers. Please contact Minuteman International, Inc. for procedures in warranty claims against these manufacturers.

Special warning to purchaser — Use of replacement filters and/or prefilters not manufactured by Minuteman International, Inc. or its designated licensees, will void all warranties expressed or implied.

A potential health hazard exists without exact original equipment replacement.

All warranted items become the sole property of Minuteman International, Inc. or its original manufacturer, whichever the case may be.

Minuteman International, Inc. disclaims any implied warranty, including the warranty of merchantability and the warranty of fitness for a particular purpose. Minuteman International, Inc. assumes no responsibility for any special, incidental or consequential damages.

This limited warranty is applicable only in the U.S.A. and Canada, and is extended only to the original user/purchaser of this product. Customers outside the U.S.A. and Canada should contact their local distributor for export warranty policies. Minuteman International, Inc. is not responsible for costs or repairs performed by persons other than those specifically authorized by Minuteman International, Inc. This warranty does not apply to damage from transportation, alterations by unauthorized persons, misuse or abuse of the equipment, use of non-compatible chemicals, or damage to property, or loss of income due to malfunctions of the product.

If a difficulty develops with this machine, you should contact the dealer from whom it was purchased.

This warranty gives you specific legal rights, and you may have other rights which vary from state to state. Some states do not allow the exclusion or limitation of special, incidental or consequential damages, or limitations on how long an implied warranty lasts, so the above exclusions and limitations may not apply to you.

Minuteman[®]

A Minuteman International Company

World Headquarters

Minuteman International, Inc.
111 South Rohlwing Road
Addison, Illinois 60101

(630) 627-6900
FAX (630) 627-1130

Minuteman Canada, Inc.
2210 Drew Road
Mississauga, Ontario
L5S 1B1

(905) 673-3222
FAX (905) 673-5161

988010
Rev. A 9/05
Printed in U.S.A.